



MANTIS CONVEYOR
PRODUCTS® by NHI

CONVEYOR PARTS & PRODUCTS

- Return Idlers
- Troughing Assemblies
- Steel and Impact Idlers
- Wing Pulleys
- Drum Pulleys
- Impact Beds
- Bearings

WHY MANTIS?

Unleash the full potential of your conveyor system with Mantis, the undisputed leader in the conveyor component industry. With 60 years of experience and a commitment to innovation, we offer a complete range of high-quality idlers, pulleys, and mechanical components that are built to last.

Our state-of-the-art 140,000 sq. ft. facility, featuring the latest in stamping, robotic welding, laser cutting, injection molding, machining, and automation technologies, guarantees that our products will perform at their best, even in the harshest environments. Our team of experts, with a deep understanding of bearing design, manufacturing, performance, and specifications, ensures that every component we make is compliant with ISO 9001 quality system and industry standards.

At Mantis, we're dedicated to providing our customers with customized solutions to their conveyor component challenges. Our in-house product and mechanical engineering services, along with on-site technical support, make us the go-to choice for anyone looking to optimize their conveyor system.

Why settle for less when you can have the best? Our products are designed with the lowest total cost of ownership in mind and are proudly made in the USA. We subject each component to rigorous testing to ensure that our customers receive top-performing products every time. Our reputation for on-time delivery and exceptional customer service makes Mantis the clear choice for anyone looking to elevate their conveyor system. Don't wait, order now and experience the difference with Mantis!



What We Tested:

MANTIS Conveyor Products CEMA Idler

Why We Tested:

Bearing contamination can cause idlers to spin roughly or seize. That leads to downtime—and time is money. To shield bearings from contaminants that can affect performance and ROI, we designed MANTIS CEMA-rated idlers with four layers of protection:

1. External Nylon Labyrinth Seal
2. Secondary Internal Labyrinth Seal
3. Chamber Lock Technology
4. Proprietary Defender® Bearings

How We Tested:

Our CEMA Idler Slurry Tester simulated loading per CEMA Standard 502 at a belt speed of 400 FPM for the NHI MANTIS CEMA idler and two leading competitors. Instead of just water spray, we ran multiple tests using a slurry consisting of chemicals and particles designed to corrode, penetrate, and abrade the test article.

What We Found:

After **40 hours** of slurry testing, we manually disassembled and inspected all three idlers.

Competitor #1 Idler:



- Completely seized.
- Excessive contamination in both bearings throughout the inner cavity.

Competitor #2 Idler:



- Idler spun very rough.
- Heavy contamination in one bearing with evidence of slurry pass-through.
- Second bearing also showed signs of contamination.

MANTIS CEMA Idler:



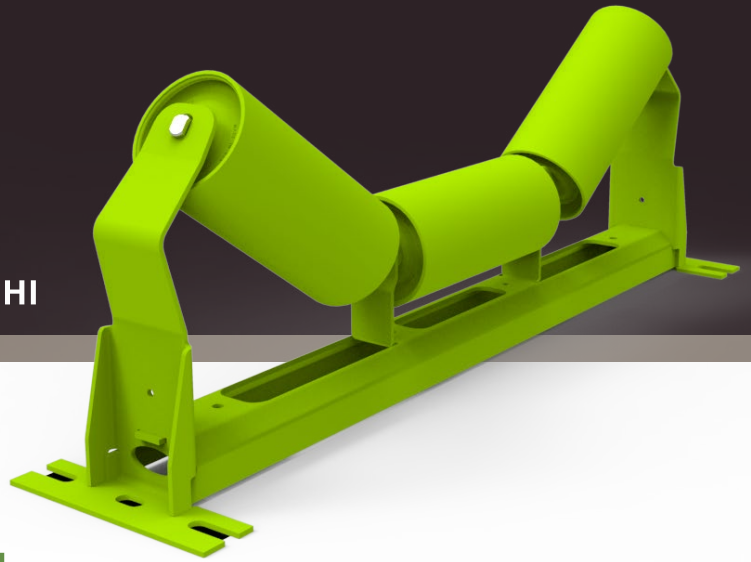
- No change in nylon overmold.
- Seal maintained full contact with the stamping.
- Slurry fully contained within chamber lock.
- No debris on bearing seals.
- No contamination inboard of bearings.
- ZERO contaminants found in bearing grease!

Conclusion:

MANTIS CEMA Idlers stand up to the toughest conditions and keep your line moving.



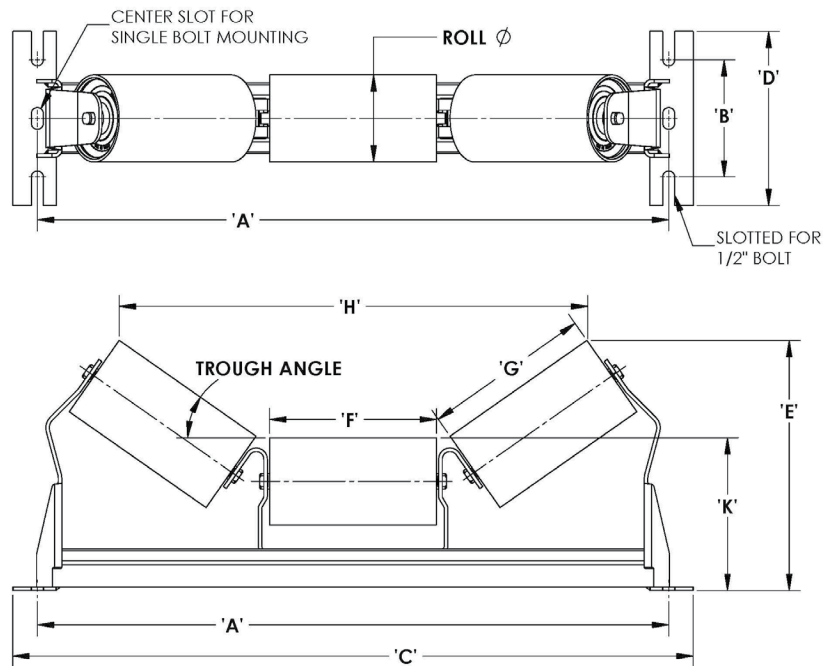
MANTIS CONVEYOR
PRODUCTS® by NHI



CEMA B Troughing Assemblies

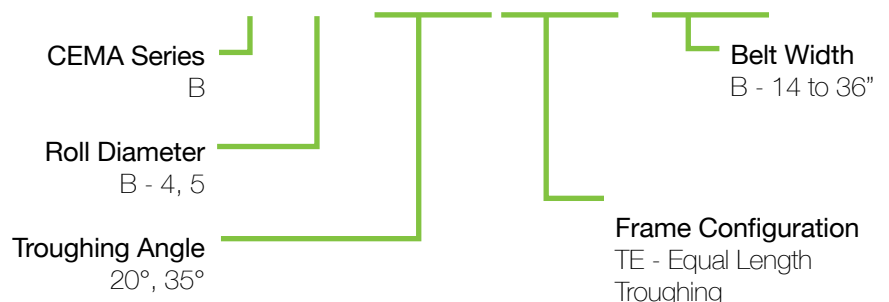
All CEMA B Trough Assemblies use NHI's proprietary three piece formed sheet steel frames. These frames are engineered to minimize material usage and overall weight while also providing defined openings for spillover and other debris to pass through the frame and away from the rollers, thereby reducing the need for routine cleanup and extending the life of the idlers.

- Lighter weight and engineered for long life.
- Streamlined 3-piece design with fewer welds; provides far greater durability.
- Engineered for better belt alignment, less spillover.
- Center-section Spillover Passages stamped out of frame to create risers without any weak-pointwelds.
- Spillover Passages allow debris to fall through frame; won't build up on base like competitors' frames.
- Less weight means lower shipping costs, less stress on your underlying structure.
- Equipped with NHI's patented idlers.



Trough Part Numbering

XX-XXXX-XX



MANTIS CEMA B Trough Assembly

20° Equal Length Trough Assembly — 4" Roll Diameter

| Belt Width | Part No. | A | B | C | D | E | F | G | H | K | Wt (lb) |
|------------|------------|----|---|--------|---|--------|-------|-------|--------|---|---------|
| 14 | B4-20TE-14 | 23 | 6 | 25-1/4 | 8 | 9-1/8 | 5 | 6 | 17-7/8 | 7 | 25 |
| 16 | B4-20TE-16 | 25 | 6 | 27-1/4 | 8 | 9-1/8 | 6 | 6 | 18-7/8 | 7 | 26 |
| 18 | B4-20TE-18 | 27 | 6 | 29-1/4 | 8 | 9-1/2 | 7 | 7 | 21-3/4 | 7 | 28 |
| 20 | B4-20TE-20 | 29 | 6 | 31-1/4 | 8 | 9-3/4 | 7-5/8 | 7-5/8 | 23-5/8 | 7 | 30 |
| 24 | B4-20TE-24 | 33 | 6 | 35-1/4 | 8 | 10-1/4 | 9 | 9 | 27-1/2 | 7 | 33 |
| 30 | B4-20TE-30 | 39 | 6 | 41-1/4 | 8 | 10-7/8 | 11 | 11 | 33-1/4 | 7 | 37 |
| 36 | B4-20TE-36 | 45 | 6 | 47-1/4 | 8 | 11-1/2 | 13 | 13 | 40 | 7 | 42 |

35° Equal Length Trough Assembly — 4" Roll Diameter

| Belt Width | Part No. | A | B | C | D | E | F | G | H | K | Wt (lb) |
|------------|------------|----|---|--------|---|--------|-------|-------|--------|---|---------|
| 14 | B4-35TE-14 | 23 | 6 | 25-1/4 | 8 | 10-1/2 | 5 | 6 | 16-1/8 | 7 | 26 |
| 16 | B4-35TE-16 | 25 | 6 | 27-1/4 | 8 | 10-1/2 | 6 | 6 | 17-1/8 | 7 | 27 |
| 18 | B4-35TE-18 | 27 | 6 | 29-1/4 | 8 | 11-1/8 | 7 | 7 | 19-7/8 | 7 | 29 |
| 20 | B4-35TE-20 | 29 | 6 | 31-1/4 | 8 | 11-1/2 | 7-5/8 | 7-5/8 | 21-1/2 | 7 | 30 |
| 24 | B4-35TE-24 | 33 | 6 | 35-1/4 | 8 | 12-1/4 | 9 | 9 | 25 | 7 | 34 |
| 30 | B4-35TE-30 | 39 | 6 | 41-1/4 | 8 | 13-3/8 | 11 | 11 | 30-3/8 | 7 | 38 |
| 36 | B4-35TE-36 | 45 | 6 | 47-1/4 | 8 | 14-1/2 | 13 | 13 | 35-5/8 | 7 | 43 |

20° Equal Length Trough Assembly — 5" Roll Diameter

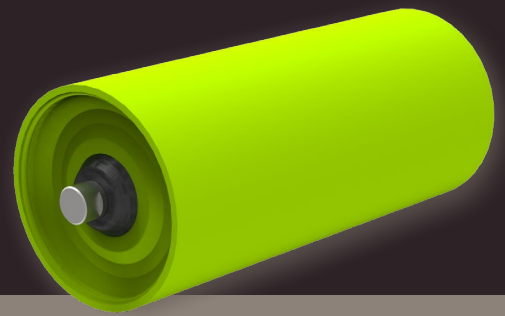
| Belt Width | Part No. | A | B | C | D | E | F | G | H | K | Wt (lb) |
|------------|------------|----|---|--------|---|--------|-------|-------|--------|-------|---------|
| 14 | B5-20TE-14 | 23 | 6 | 25-1/4 | 8 | 9-5/8 | 5 | 6 | 17-1/2 | 7-1/2 | 29 |
| 16 | B5-20TE-16 | 25 | 6 | 27-1/4 | 8 | 9-5/8 | 6 | 6 | 18-1/2 | 7-1/2 | 30 |
| 18 | B5-20TE-18 | 27 | 6 | 29-1/4 | 8 | 10 | 7 | 7 | 21-1/2 | 7-1/2 | 33 |
| 20 | B5-20TE-20 | 29 | 6 | 31-1/4 | 8 | 10-1/4 | 7-5/8 | 7-5/8 | 23-3/8 | 7-1/2 | 34 |
| 24 | B5-20TE-24 | 33 | 6 | 35-1/4 | 8 | 10-5/8 | 9 | 9 | 27-1/8 | 7-1/2 | 38 |
| 30 | B5-20TE-30 | 39 | 6 | 41-1/4 | 8 | 11-3/8 | 11 | 11 | 33 | 7-1/2 | 43 |
| 36 | B5-20TE-36 | 45 | 6 | 47-1/4 | 8 | 12 | 13 | 13 | 38-5/8 | 7-1/2 | 48 |

35° Equal Length Trough Assembly — 5" Roll Diameter

| Belt Width | Part No. | A | B | C | D | E | F | G | H | K | Wt (lb) |
|------------|------------|----|---|--------|---|--------|-------|-------|--------|-------|---------|
| 14 | B5-35TE-14 | 23 | 6 | 25-1/4 | 8 | 11 | 5 | 6 | 15-1/2 | 7-1/2 | 30 |
| 16 | B5-35TE-16 | 25 | 6 | 27-1/4 | 8 | 11 | 6 | 6 | 16-1/2 | 7-1/2 | 31 |
| 18 | B5-35TE-18 | 27 | 6 | 29-1/4 | 8 | 11-1/2 | 7 | 7 | 19-1/4 | 7-1/2 | 33 |
| 20 | B5-35TE-20 | 29 | 6 | 31-1/4 | 8 | 12 | 7-5/8 | 7-5/8 | 21 | 7-1/2 | 35 |
| 24 | B5-35TE-24 | 33 | 6 | 35-1/4 | 8 | 12-3/4 | 9 | 9 | 24-1/2 | 7-1/2 | 39 |
| 30 | B5-35TE-30 | 39 | 6 | 41-1/4 | 8 | 13-7/8 | 11 | 11 | 29-3/4 | 7-1/2 | 44 |
| 36 | B5-35TE-36 | 45 | 6 | 47-1/4 | 8 | 15 | 13 | 13 | 35 | 7-1/2 | 50 |



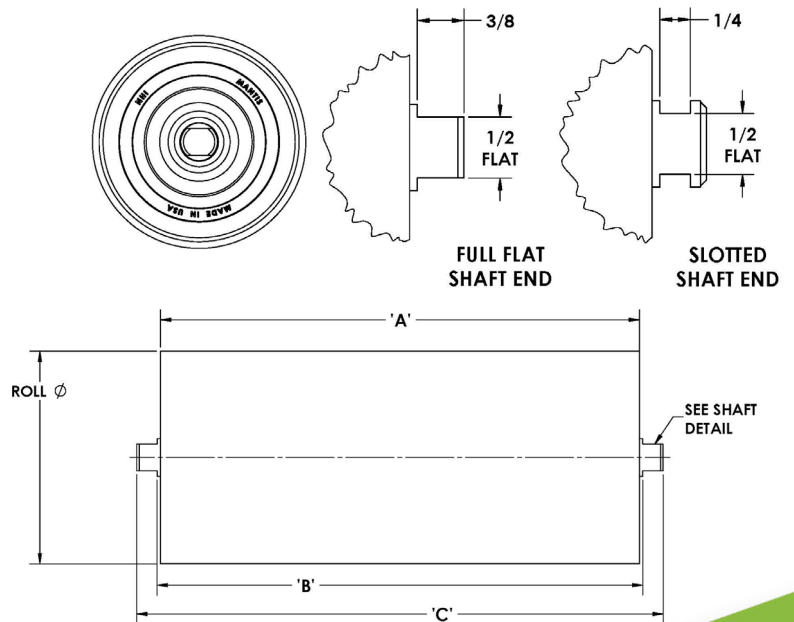
MANTIS CONVEYOR PRODUCTS® by NHI



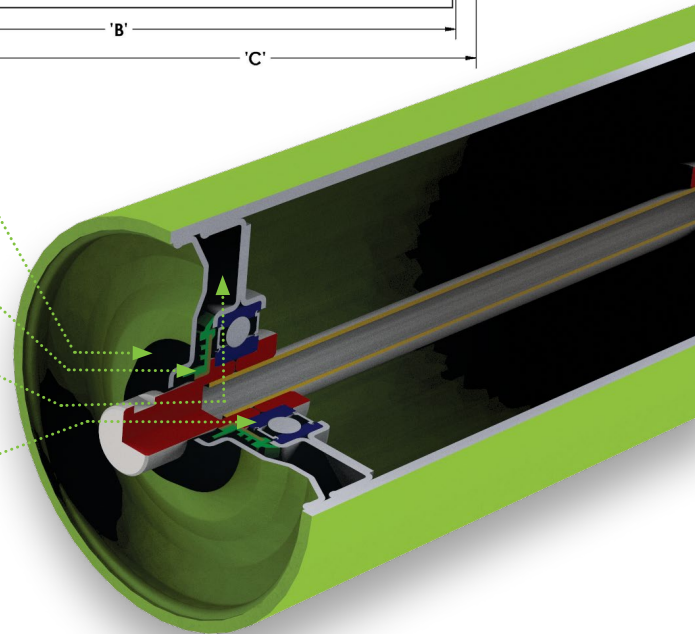
CEMA B Idlers

Idlers are equipped with 6204 series Ball Bearings, larger than the industry standard 6203, for increased load capacity and extended life. These larger bearings are sealed with NHI's proprietary 6204 Defender® Triple Lip Seals for enhanced contamination resistance and grease retention.

- Patented design.
- Internal edge weld—no contact with conveyor belt.
- Four layers of protection from contaminants that cause other idlers to break down.



- 1. External Nylon Labyrinth Seal** on end cap reduces possible intrusion area by up to 65% versus competitors' idlers.
- 2. Secondary Internal Labyrinth Seal** with contact lip prevents contaminants from reaching bearings.
- 3. Chamber Lock Technology** creates a separate holding area for contaminants, should any penetrate the first two layers of protection.
- 4. Proprietary Defender® Bearings** sized larger than industry standard, for improved capacity and extended life. These bearings feature a proprietary seal design for superior contaminant resistance and grease retention.



Idler Part Numbering **XX-XX-XX-X**

CEMA Series
B

Roll Diameter
B - 4, 5

Frame Configuration
TE - Equal Length Troughing

Shaft End
No suffix - Full flat
S - Slotted

Belt Width
B - 14-36"

MANTIS CEMA B Idlers

CEMA B 4" Roll, Full Flats

| Belt Width | Part No. | A | B | C | Wt (lb) |
|------------|----------|---------|---------|----------|---------|
| 14 | B4-TE-14 | 5 | 5-1/8 | 5-15/16 | 4.6 |
| 16 | B4-TE-16 | 6 | 6-1/8 | 6-15/16 | 5.0 |
| 18 | B4-TE-18 | 7 | 7-1/8 | 7-15/16 | 5.5 |
| 20 | B4-TE-20 | 7-11/16 | 7-13/16 | 8-5/8 | 5.8 |
| 24 | B4-TE-24 | 9 | 9-1/8 | 9-15/16 | 6.4 |
| 30 | B4-TE-30 | 11 | 11-1/8 | 11-15/16 | 7.3 |
| 36 | B4-TE-36 | 13 | 13-1/8 | 13-15/16 | 8.2 |

CEMA B 4" Roll, Slotted Ends

| Belt Width | Part No. | A | B | C | Wt (lb) |
|------------|------------|---------|---------|----------|---------|
| 14 | B4-TE-14-S | 5 | 5-1/8 | 5-15/16 | 4.6 |
| 16 | B4-TE-16-S | 6 | 6-1/8 | 6-15/16 | 5.0 |
| 18 | B4-TE-18-S | 7 | 7-1/8 | 7-15/16 | 5.5 |
| 20 | B4-TE-20-S | 7-11/16 | 7-13/16 | 8-5/8 | 5.8 |
| 24 | B4-TE-24-S | 9 | 9-1/8 | 9-15/16 | 6.4 |
| 30 | B4-TE-30-S | 11 | 11-1/8 | 11-15/16 | 7.3 |
| 36 | B4-TE-36-S | 13 | 13-1/8 | 13-15/16 | 8.2 |

CEMA B 5" Roll, Full Flats

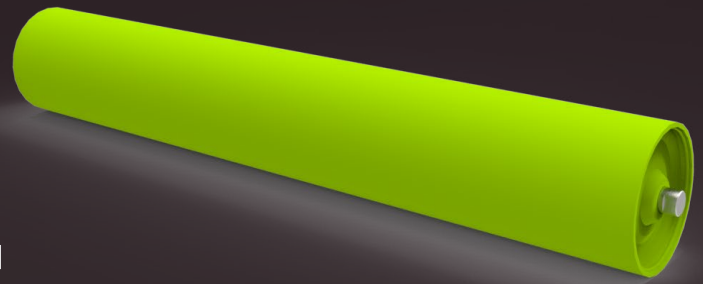
| Belt Width | Part No. | A | B | C | Wt (lb) |
|------------|----------|---------|---------|----------|---------|
| 14 | B5-TE-14 | 5 | 5-1/8 | 5-15/16 | 5.8 |
| 16 | B5-TE-16 | 6 | 6-1/8 | 6-15/16 | 6.3 |
| 18 | B5-TE-18 | 7 | 7-1/8 | 7-15/16 | 6.9 |
| 20 | B5-TE-20 | 7-11/16 | 7-13/16 | 8-5/8 | 7.3 |
| 24 | B5-TE-24 | 9 | 9-1/8 | 9-15/16 | 8.0 |
| 30 | B5-TE-30 | 11 | 11-1/8 | 11-15/16 | 9.2 |
| 36 | B5-TE-36 | 13 | 13-1/8 | 13-15/16 | 10.3 |

CEMA B 5" Roll, Slotted Ends

| Belt Width | Part No. | A | B | C | Wt (lb) |
|------------|------------|---------|---------|----------|---------|
| 14 | B5-TE-14-S | 5 | 5-1/8 | 5-15/16 | 5.8 |
| 16 | B5-TE-16-S | 6 | 6-1/8 | 6-15/16 | 6.3 |
| 18 | B5-TE-18-S | 7 | 7-1/8 | 7-15/16 | 6.9 |
| 20 | B5-TE-20-S | 7-11/16 | 7-13/16 | 8-5/8 | 7.3 |
| 24 | B5-TE-24-S | 9 | 9-1/8 | 9-15/16 | 8.0 |
| 30 | B5-TE-30-S | 11 | 11-1/8 | 11-15/16 | 9.2 |
| 36 | B5-TE-36-S | 13 | 13-1/8 | 13-15/16 | 10.3 |



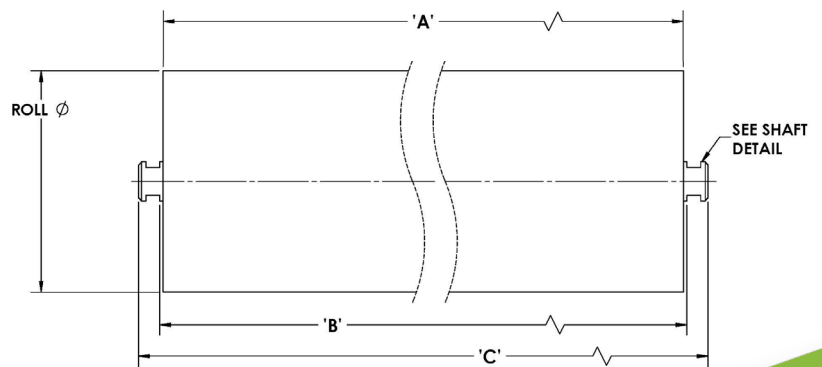
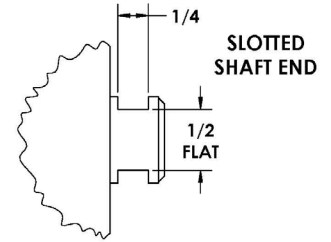
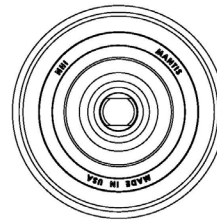
MANTIS CONVEYOR PRODUCTS® by NHI



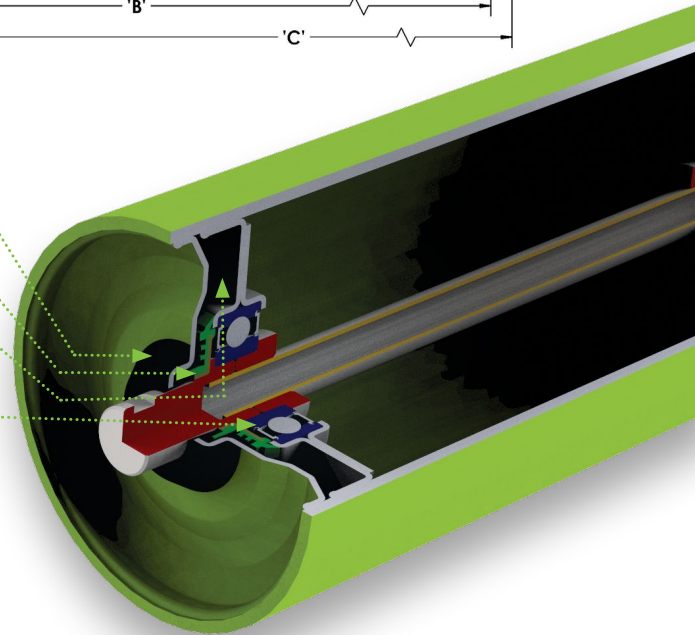
CEMA B Return Idlers

Manufactured using the same bearing and sealing methods as our CEMA B Idlers, these Return Idlers built to last.

- Patented design.
- Internal edge weld—no contact with conveyor belt.
- Four layers of protection from contaminants that cause other idlers to break down.



1. **External Nylon Labyrinth Seal** on end cap reduces possible intrusion area by up to 65% versus competitors' idlers.
2. **Secondary Internal Labyrinth Seal** with contact lip prevents contaminants from reaching bearings.
3. **Chamber Lock Technology** creates a separate holding area for contaminants, should any penetrate the first two layers of protection.
4. **Proprietary Defender® Bearings** sized larger than industry standard, for improved capacity and extended life. These bearings feature a proprietary seal design for superior contaminant resistance and grease retention.



Return Part Numbering

XX-X-XXX

CEMA Series
B

Roll Diameter
B - 4, 5

Belt Width
B - 14-36"

R - Return roll

MANTIS CEMA B Return Rolls

CEMA B 4" Return Roll

| Belt Width | Part No. | A | B | C | Wt (lb) |
|------------|----------|--------|--------|---------|---------|
| 14 | B4-R-14X | 17-1/2 | 17-5/8 | 18-7/16 | 10.5 |
| 16 | B4-R-16X | 19-1/2 | 19-5/8 | 20-7/16 | 11.4 |
| 18 | B4-R-18X | 21-1/2 | 21-5/8 | 22-7/16 | 12.4 |
| 20 | B4-R-20X | 23-1/2 | 23-5/8 | 24-7/16 | 13.3 |
| 24 | B4-R-24X | 27-1/2 | 27-5/8 | 28-7/16 | 15.1 |
| 30 | B4-R-30X | 33-1/2 | 33-5/8 | 34-7/16 | 17.9 |
| 36 | B4-R-36X | 39-1/2 | 39-5/8 | 40-7/16 | 20.6 |

CEMA B 5" Return Roll

| Belt Width | Part No. | A | B | C | Wt (lb) |
|------------|----------|--------|--------|---------|---------|
| 14 | B5-R-14X | 17-1/2 | 17-5/8 | 18-7/16 | 13.2 |
| 16 | B5-R-16X | 19-1/2 | 19-5/8 | 20-7/16 | 14.3 |
| 18 | B5-R-18X | 21-1/2 | 21-5/8 | 22-7/16 | 15.5 |
| 20 | B5-R-20X | 23-1/2 | 23-5/8 | 24-7/16 | 16.6 |
| 24 | B5-R-24X | 27-1/2 | 27-5/8 | 28-7/16 | 18.9 |
| 30 | B5-R-30X | 33-1/2 | 33-5/8 | 34-7/16 | 22.3 |
| 36 | B5-R-36X | 39-1/2 | 39-5/8 | 40-7/16 | 25.8 |

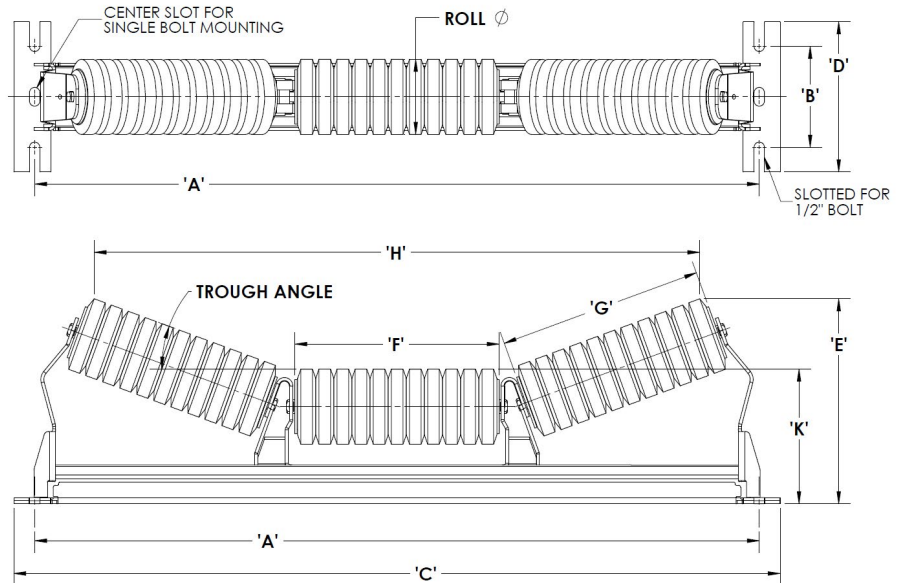


MANTIS CONVEYOR
PRODUCTS® by NHI

CEMA B Impact Troughing Assemblies

Designed to utilize a similar manufacturing method as our standard CEMA B Troughing Assemblies but with added bottom support and angled gussets for increased load capacity with improved torsional rigidity and greater stiffness.

- Lighter weight and engineered for long life.
- Uses Mantis B/C impact idlers
- Streamlined multi-piece design with fewer welds; provides greater durability
- Engineered for better belt alignment, less spillover.
- Center-section Spillover Passages stamped out of frame to create risers without any weak-point welds.
- Spillover Passages allow debris to fall through frame; won't build up on base like competitors' frames.
- Less weight means lower shipping costs, and less stress on your underlying structure.



Impact Trough Part Numbering

XX-XXXX-XX

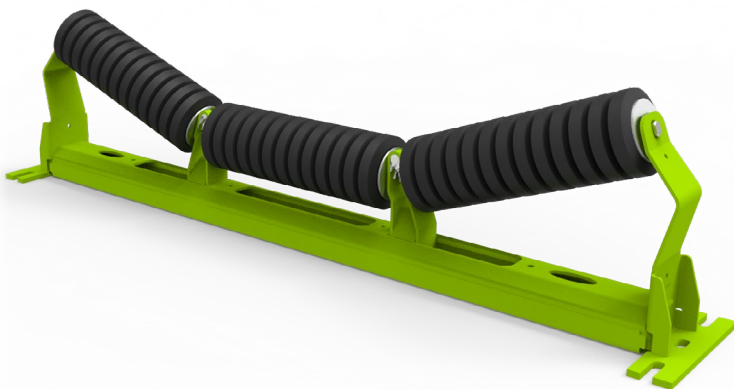
CEMA Series
B

Roll
Diameter
4, 5

Troughing
Angle
20°, 35°

Belt Width
14 to 36"

Frame Configuration
TEI - Equal Length
Troughing Impact



MANTIS B Impact Troughing Assemblies

20° Equal Length Impact Assembly — 4" Roll Diameter

| Belt Width | Part No. | A | B | C | D | E | F | G | H | K | Wt (lb) |
|------------|-------------|----|---|--------|---|---------|----|----|----------|--------|---------|
| 18 | B4-20TEI-18 | 27 | 6 | 29-1/4 | 8 | 9-5/8 | 7 | 7 | 21-1/8 | 7-3/16 | 36.2 |
| 24 | B4-20TEI-24 | 33 | 6 | 35-1/4 | 8 | 10-3/16 | 9 | 9 | 26-13/16 | 7-3/16 | 43.9 |
| 30 | B4-20TEI-30 | 39 | 6 | 41-1/4 | 8 | 10-7/8 | 11 | 11 | 32-5/8 | 7-3/16 | 51.4 |
| 36 | B4-20TEI-36 | 45 | 6 | 47-1/4 | 8 | 11-5/8 | 13 | 13 | 38-3/8 | 7-3/16 | 59.1 |

35° Equal Length Impact Assembly — 4" Roll Diameter

| Belt Width | Part No. | A | B | C | D | E | F | G | H | K | Wt (lb) |
|------------|-------------|----|---|--------|---|---------|----|----|----------|--------|---------|
| 18 | B4-35TEI-18 | 27 | 6 | 29-1/4 | 8 | 11-1/8 | 7 | 7 | 19-5/16 | 7-3/16 | 37.1 |
| 24 | B4-35TEI-24 | 33 | 6 | 35-1/4 | 8 | 12-3/16 | 9 | 9 | 24-1/2 | 7-3/16 | 44.9 |
| 30 | B4-35TEI-30 | 39 | 6 | 41-1/4 | 8 | 13-3/8 | 11 | 11 | 29-11/16 | 7-3/16 | 53.8 |
| 36 | B4-35TEI-36 | 45 | 6 | 47-1/4 | 8 | 14-1/2 | 13 | 13 | 34-7/8 | 7-3/16 | 61.9 |

20° Equal Length Impact Assembly — 5" Roll Diameter

| Belt Width | Part No. | A | B | C | D | E | F | G | H | K | Wt (lb) |
|------------|-------------|----|---|--------|---|----------|----|----|----------|---------|---------|
| 18 | B5-20TEI-18 | 27 | 6 | 29-1/4 | 8 | 10 | 7 | 7 | 20-11/16 | 7-11/16 | 41.4 |
| 24 | B5-20TEI-24 | 33 | 6 | 35-1/4 | 8 | 10-11/16 | 9 | 9 | 26-1/2 | 7-11/16 | 50.5 |
| 30 | B5-20TEI-30 | 39 | 6 | 41-1/4 | 8 | 11-3/8 | 11 | 11 | 32-5/16 | 7-11/16 | 59.5 |
| 36 | B5-20TEI-36 | 45 | 6 | 47-1/4 | 8 | 12-1/8 | 13 | 13 | 38 | 7-11/16 | 68.7 |

35° Equal Length Impact Assembly — 5" Roll Diameter

| Belt Width | Part No. | A | B | C | D | E | F | G | H | K | Wt (lb) |
|------------|-------------|----|---|--------|---|----------|----|----|----------|---------|---------|
| 18 | B5-35TEI-18 | 27 | 6 | 29-1/4 | 8 | 11-1/2 | 7 | 7 | 18-11/16 | 7-11/16 | 42.2 |
| 24 | B5-35TEI-24 | 33 | 6 | 35-1/4 | 8 | 12-5/8 | 9 | 9 | 23-7/8 | 7-11/16 | 51.5 |
| 30 | B5-35TEI-30 | 39 | 6 | 41-1/4 | 8 | 13-13/16 | 11 | 11 | 29-1/8 | 7-11/16 | 61.9 |
| 36 | B5-35TEI-36 | 45 | 6 | 47-1/4 | 8 | 14-7/8 | 13 | 13 | 34-5/16 | 7-11/16 | 71.5 |



MANTIS CONVEYOR PRODUCTS® by NHI

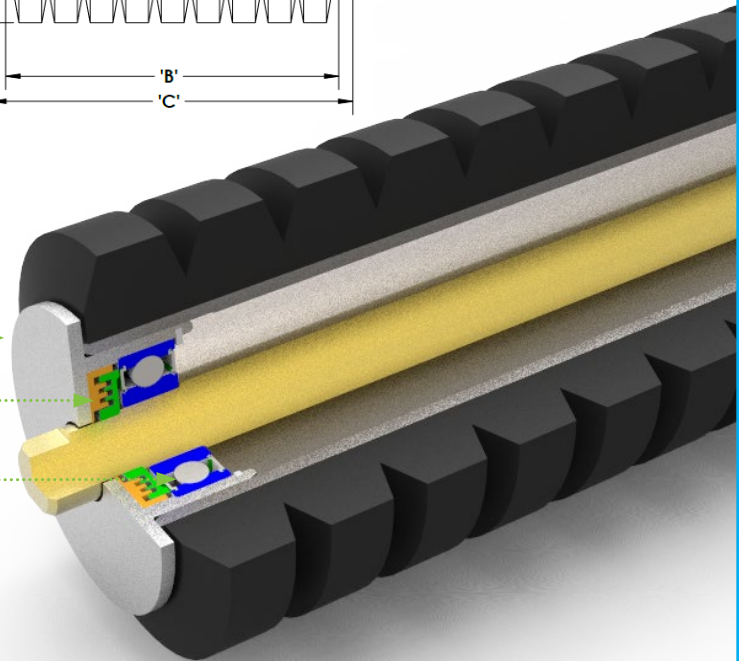
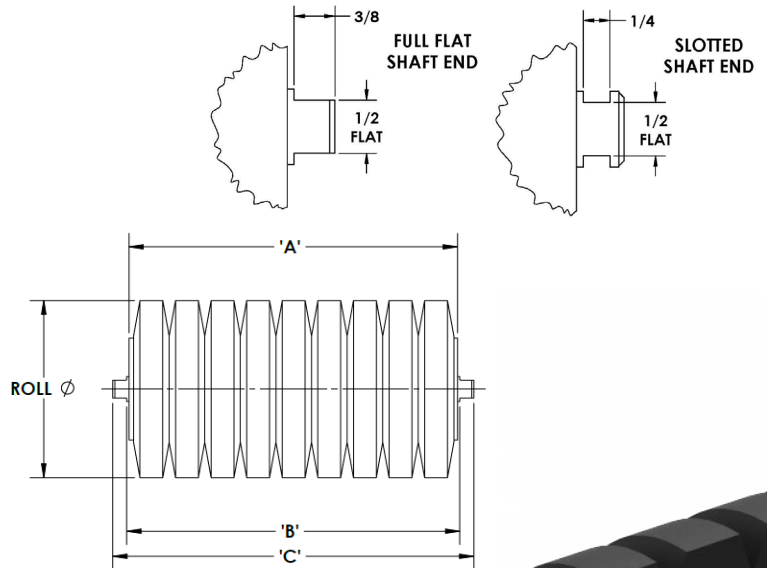
CEMA B/C Impact Idlers

These rollers are designed to minimize damage to the belt and underlying frame structure by absorbing impact energy through use of natural rubber rings on the outer diameter of the roller.

■ **Engineered Rubber Discs** combine a tapered profile and precise hardness spec to maximize impact absorption without sacrificing belt support.

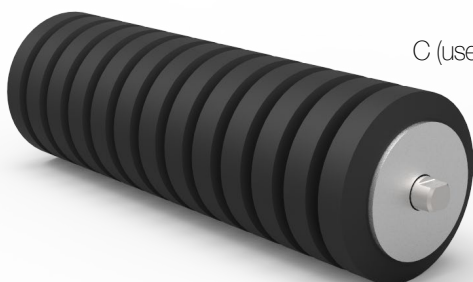
■ **Oversized Stepped Shaft** is larger between the bearings to provide superior bending and fatigue resistance over the length of the roller.

1. **Aluminum Bearing Housing** for increased corrosion resistance
2. **Internal Labyrinth Seal** with contact lip prevents contaminants from reaching bearings.
3. **Proprietary Defender® Bearings** feature a proprietary seal design or superior contaminant resistance and grease retention.
4. **Innovative Unique Design** created to produce a longer product lifespan



Impact Part Numbering

XX-XX-XX-X



CEMA Series
C (used for B & C applications)

Roll Diameter
C - 4, 5

Frame
Configuration
TEI - Equal Length
Troughing Impact

Shaft End
No suffix - Full flat
S - Slotted

Belt Width
18-60"

CEMA B/C Impact Impact Idlers

CEMA C Rubber Disc Impact Idler 4"

| Belt Width | Part No. Full Flat | Part No. Slotted ends | A | B | C | Wt (lb) |
|------------|--------------------|-----------------------|----|--------|--------|---------|
| 18 | C4-TEI-18 | C4-TEI-18-S | 7 | 7-1/8 | 7-7/8 | 6.2 |
| 24 | C4-TEI-24 | C4-TEI-24-S | 9 | 9-1/8 | 9-7/8 | 7.8 |
| 30 | C4-TEI-30 | C4-TEI-30-S | 11 | 11-1/8 | 11-7/8 | 9.4 |
| 36 | C4-TEI-36 | C4-TEI-36-S | 13 | 13-1/8 | 13-7/8 | 11 |
| 42 | C4-TEI-42 | C4-TEI-42-S | 15 | 15-1/8 | 15-7/8 | 12.5 |
| 48 | C4-TEI-48 | C4-TEI-48-S | 17 | 17-1/8 | 17-7/8 | 14.1 |
| 54 | C4-TEI-54 | C4-TEI-54-S | 19 | 19-1/8 | 19-7/8 | 15.7 |
| 60 | C4-TEI-60 | C4-TEI-60-S | 21 | 21-1/8 | 21-7/8 | 17.3 |

CEMA C Rubber Disc Impact Idler 5"

| Belt Width | Part No. Full Flat | Part No. Slotted ends | A | B | C | Wt (lb) |
|------------|--------------------|-----------------------|----|--------|--------|---------|
| 18 | C5-ITEI-18 | C5-TEI-18-S | 7 | 7-1/8 | 7-7/8 | 8 |
| 24 | C5-TEI-24 | C5-TEI-24-S | 9 | 9-1/8 | 9-7/8 | 10 |
| 30 | C5-TEI-30 | C5-TEI-30-S | 11 | 11-1/8 | 11-7/8 | 12.1 |
| 36 | C5-TEI-36 | C5-TEI-36-S | 13 | 13-1/8 | 13-7/8 | 14.1 |
| 42 | C5-TEI-42 | C5-TEI-42-S | 15 | 15-1/8 | 15-7/8 | 16.2 |
| 48 | C5-TEI-48 | C5-TEI-48-S | 17 | 17-1/8 | 17-7/8 | 18.3 |
| 54 | C5-TEI-54 | C5-TEI-54-S | 19 | 19-1/8 | 19-7/8 | 20.3 |
| 60 | C5-TEI-60 | C5-TEI-60-S | 21 | 21-1/8 | 21-7/8 | 22.4 |



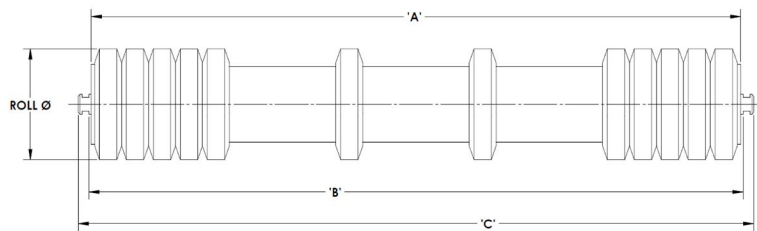
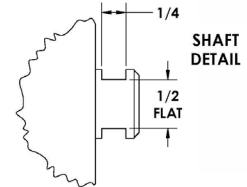
MANTIS CONVEYOR PRODUCTS® by NHI

CEMA B/C Rubber Disc Return Idlers

Rubber Disc Return Idlers are your solution to backside buildup on the return side of your conveyor. These rollers are designed to shed stuck on debris from the belt and keep your conveyor running true and clean.

■ Engineered Rubber Discs provide significant improvements in both material shedding and belt tracking.

■ Rubber Disc Spacers completely cover the empty space between discs to prevent disc walk in addition to providing exceptional corrosion resistance across the entire length of the roller.



1. Aluminum Bearing Housing

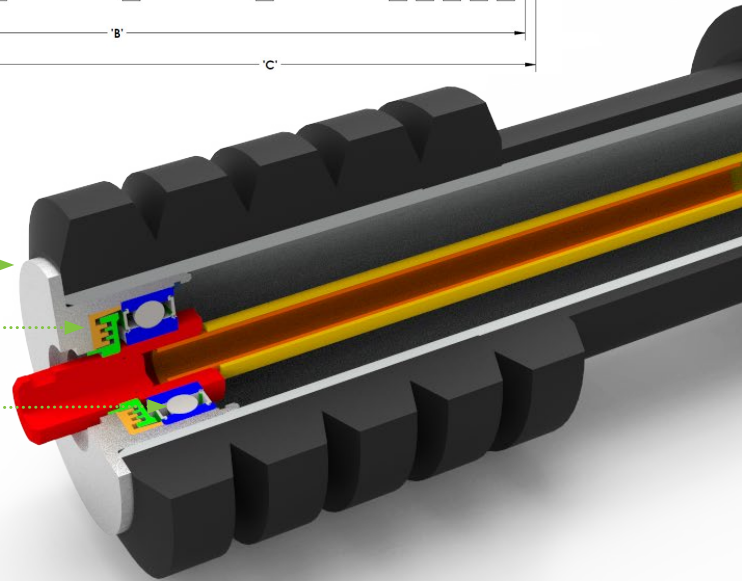
for increased corrosion resistance

2. Internal Labyrinth Seal with contact lip

prevents contaminants from reaching bearings.

3. Proprietary Defender® Bearings

feature a proprietary seal design or superior contaminant resistance and grease retention.



Rubber Disc Return Part Numbering

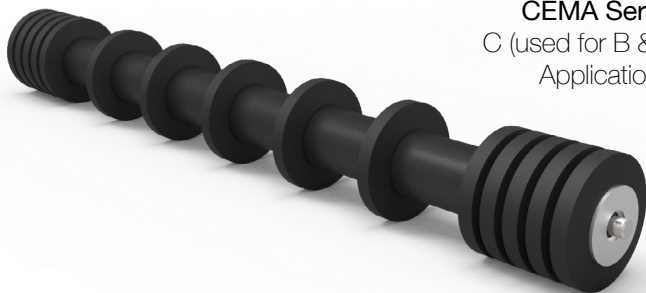
XX-XXX-XX

CEMA Series C (used for B & C Applications)

Belt Width 18-60"

Roll Diameter 4, 5

RRD - Rubber Disc Return roll



CEMA B,C Rubber Disc Return Idlers

CEMA C Replacement Return Idler 4"

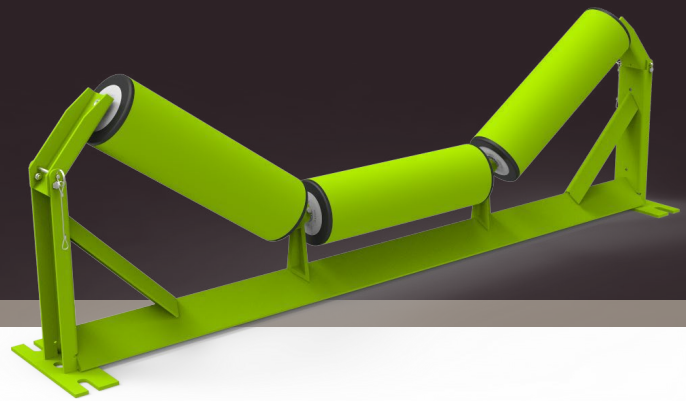
| Belt Width | Part No. | A | B | C | Wt (lb) |
|------------|-----------|--------|--------|---------|---------|
| 18 | C4-RRD-18 | 21-1/2 | 21-5/8 | 22-7/16 | 12.3 |
| 20 | C4-RRD-20 | 23-1/2 | 23-5/8 | 24-7/16 | 12.9 |
| 24 | C4-RRD-24 | 27-1/2 | 27-5/8 | 28-7/16 | 14.6 |
| 30 | C4-RRD-30 | 33-1/2 | 33-5/8 | 34-7/16 | 16.9 |
| 36 | C4-RRD-36 | 39-1/2 | 39-5/8 | 40-7/16 | 19.2 |
| 42 | C4-RRD-42 | 45-1/2 | 45-5/8 | 46-7/16 | 21.5 |
| 48 | C4-RRD-48 | 51-1/2 | 51-5/8 | 52-7/16 | 23.8 |
| 54 | C4-RRD-54 | 57-1/2 | 57-5/8 | 58-7/16 | 26.1 |
| 60 | C4-RRD-60 | 63-1/2 | 63-5/8 | 64-7/16 | 28.4 |

CEMA C Replacement Return Idler 5"

| Belt Width | Part No. | A | B | C | Wt (lb) |
|------------|-----------|--------|--------|---------|---------|
| 18 | C5-RRD-18 | 21-1/2 | 21-5/8 | 22-7/16 | 15.2 |
| 20 | C5-RRD-20 | 23-1/2 | 23-5/8 | 24-7/16 | 15.9 |
| 24 | C5-RRD-24 | 27-1/2 | 27-5/8 | 28-7/16 | 17.8 |
| 30 | C5-RRD-30 | 33-1/2 | 33-5/8 | 34-7/16 | 20.3 |
| 36 | C5-RRD-36 | 39-1/2 | 39-5/8 | 40-7/16 | 22.9 |
| 42 | C5-RRD-42 | 45-1/2 | 45-5/8 | 46-7/16 | 25.4 |
| 48 | C5-RRD-48 | 51-1/2 | 51-5/8 | 52-7/16 | 28 |
| 54 | C5-RRD-54 | 57-1/2 | 57-5/8 | 58-7/16 | 30.5 |
| 60 | C5-RRD-60 | 63-1/2 | 63-5/8 | 64-7/16 | 33.1 |



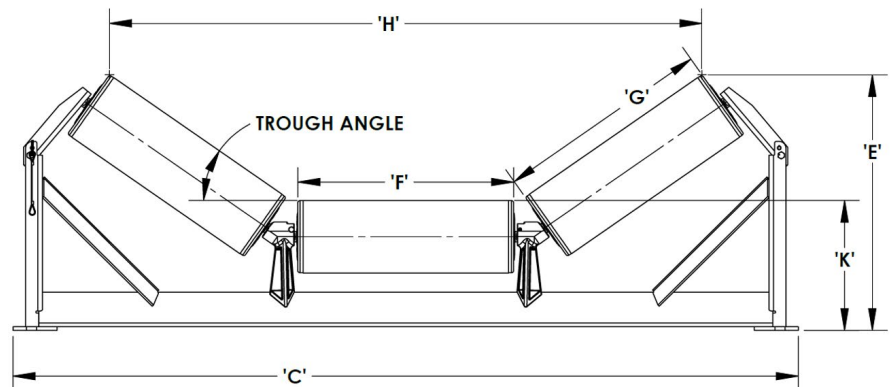
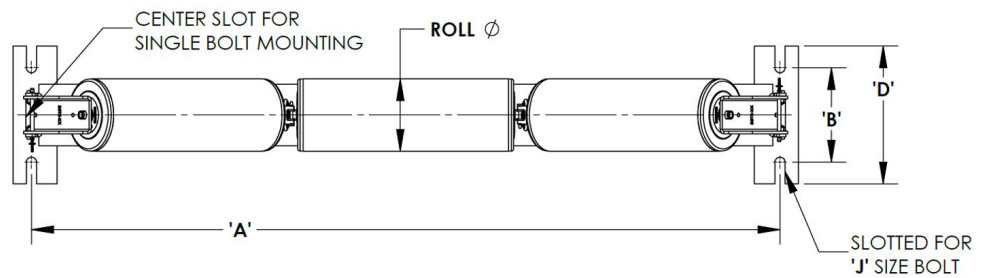
MANTIS CONVEYOR
PRODUCTS® by NHI



The CEMA C Troughing Assemblies

The Mantis TRIM series™ troughing assemblies are built to last. Manufactured with cast steel center risers and reinforced end risers, these assemblies were designed and tested to withstand extreme punishment in the harshest environments. These assemblies are equipped with long-lasting Mantis Idlers and come standard with the patent-pending TRIM (Tool-less Rapid Idler Maintenance) System. Pull the pin the end riser hinges away from the idler for easy removal and replacement.”

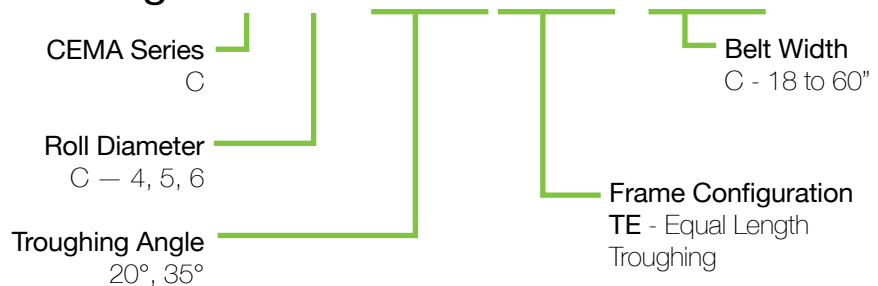
- Simply Pull the Ring Pin
- Pivot the Upper Channel outward
- Pull the Wing Roller out and up
- Reverse the process to securely lock the new roller in place, simple as that.



Unique Patent Pending Design

Trough Part Numbering

XX-XXXX-XX



MANTIS C Troughing Assemblies 4”

20° CEMA C Trough Assembly — 4” Roll Diameter

| Belt Width | Part No. | A | B | C | D | E | F | G | H | K | Wt (lb) |
|------------|------------|----|-------|--------|-------|----------|----------|----------|----------|-------|---------|
| 18 | C4-20TE-18 | 27 | 5-1/2 | 29-1/2 | 8-1/2 | 10-1/2 | 6-11/16 | 6-11/16 | 21-5/16 | 8 | 34.1 |
| 20 | C4-20TE-20 | 29 | 5-1/2 | 31-1/2 | 8-1/2 | 10-11/16 | 7-3/8 | 7-3/8 | 23-3/16 | 8 | 36.1 |
| 24 | C4-20TE-24 | 33 | 5-1/2 | 35-1/2 | 8-1/2 | 11-3/16 | 8-11/16 | 8-11/16 | 27-1/8 | 8 | 39 |
| 30 | C4-20TE-30 | 39 | 5-1/2 | 41-1/2 | 8-1/2 | 11-7/8 | 10-11/16 | 10-11/16 | 32-13/16 | 8 | 43.9 |
| 36 | C4-20TE-36 | 45 | 5-1/2 | 47-1/2 | 8-1/2 | 12-1/2 | 12-11/16 | 12-11/16 | 38-5/8 | 8 | 48.7 |
| 42 | C4-20TE-42 | 51 | 6-1/2 | 53-1/2 | 9-1/2 | 13-11/16 | 14-11/16 | 14-11/16 | 44-3/8 | 8-1/2 | 67.4 |
| 48 | C4-20TE-48 | 57 | 6-1/2 | 59-1/2 | 9-1/2 | 14-5/16 | 16-11/16 | 16-11/16 | 50-1/8 | 8-1/2 | 73.8 |
| 54 | C4-20TE-54 | 63 | 8 | 65-1/2 | 11 | 15-3/8 | 18-11/16 | 18-11/16 | 55-7/8 | 8-3/4 | 87.6 |
| 60 | C4-20TE-60 | 69 | 8 | 71-1/2 | 11 | 16-1/2 | 20-11/16 | 20-11/16 | 61-5/8 | 8-3/4 | 94.7 |

35° CEMA C Trough Assembly — 4” Roll Diameter

| Belt Width | Part No. | A | B | C | D | E | F | G | H | K | Wt (lb) |
|------------|------------|----|-------|--------|-------|---------|----------|----------|----------|-------|---------|
| 18 | C4-35TE-18 | 27 | 5-1/2 | 29-1/2 | 8-1/2 | 12-3/16 | 6-11/16 | 6-11/16 | 19-13/16 | 8 | 35.9 |
| 20 | C4-35TE-20 | 29 | 5-1/2 | 31-1/2 | 8-1/2 | 12-5/8 | 7-3/8 | 7-3/8 | 21-11/16 | 8 | 38 |
| 24 | C4-35TE-24 | 33 | 5-1/2 | 35-1/2 | 8-1/2 | 13-5/16 | 8-11/16 | 8-11/16 | 25-1/8 | 8 | 41 |
| 30 | C4-35TE-30 | 39 | 5-1/2 | 41-1/2 | 8-1/2 | 14-1/2 | 10-11/16 | 10-11/16 | 30-3/8 | 8 | 46.2 |
| 36 | C4-35TE-36 | 45 | 5-1/2 | 47-1/2 | 8-1/2 | 15-5/8 | 12-11/16 | 12-11/16 | 35-11/16 | 8 | 51.4 |
| 42 | C4-35TE-42 | 51 | 6-1/2 | 53-1/2 | 9-1/2 | 17-3/16 | 14-11/16 | 14-11/16 | 40-7/8 | 8-1/2 | 73.6 |
| 48 | C4-35TE-48 | 57 | 6-1/2 | 59-1/2 | 9-1/2 | 18-3/4 | 16-11/16 | 16-11/16 | 46-3/16 | 8-1/2 | 80.4 |
| 54 | C4-35TE-54 | 63 | 8 | 65-1/2 | 11 | 19-7/8 | 18-11/16 | 18-11/16 | 51-1/2 | 8-3/4 | 94.4 |
| 60 | C4-35TE-60 | 69 | 8 | 71-1/2 | 11 | 21 | 20-11/16 | 20-11/16 | 56-13/16 | 8-3/4 | 101.8 |

45° CEMA C Trough Assembly — 4” Roll Diameter

| Belt Width | Part No. | A | B | C | D | E | F | G | H | K | Wt (lb) |
|------------|------------|----|-------|--------|-------|----------|----------|----------|----------|-------|---------|
| 18 | C4-45TE-18 | 27 | 5-1/2 | 29-1/2 | 8-1/2 | 13-3/8 | 6-11/16 | 6-11/16 | 19-5/16 | 8 | 37.5 |
| 20 | C4-45TE-20 | 29 | 5-1/2 | 31-1/2 | 8-1/2 | 13-13/16 | 7-3/8 | 7-3/8 | 20-7/8 | 8 | 39.7 |
| 24 | C4-45TE-24 | 33 | 5-1/2 | 35-1/2 | 8-1/2 | 14-13/16 | 8-11/16 | 8-11/16 | 24-1/8 | 8 | 42.8 |
| 30 | C4-45TE-30 | 39 | 5-1/2 | 41-1/2 | 8-1/2 | 16-3/16 | 10-11/16 | 10-11/16 | 28-7/8 | 8 | 51.4 |
| 36 | C4-45TE-36 | 45 | 5-1/2 | 47-1/2 | 8-1/2 | 17-5/8 | 12-11/16 | 12-11/16 | 33-11/16 | 8 | 56.8 |
| 42 | C4-45TE-42 | 51 | 6-1/2 | 53-1/2 | 9-1/2 | 19-1/2 | 14-11/16 | 14-11/16 | 38-5/8 | 8-1/2 | 75.9 |
| 48 | C4-45TE-48 | 57 | 6-1/2 | 59-1/2 | 9-1/2 | 20-7/8 | 16-11/16 | 16-11/16 | 43-3/8 | 8-1/2 | 82.9 |
| 54 | C4-45TE-54 | 63 | 8 | 65-1/2 | 11 | 22-5/8 | 18-11/16 | 18-11/16 | 48-3/16 | 8-3/4 | 97.1 |
| 60 | C4-45TE-60 | 69 | 8 | 71-1/2 | 11 | 24-1/8 | 20-11/16 | 20-11/16 | 53-1/8 | 8-3/4 | 104.7 |

MANTIS C Troughing Assemblies 5"

20°CEMA C Trough Assembly — 5" Roll Diameter

| Belt Width | Part No. | A | B | C | D | E | F | G | H | K | Wt (lb) |
|------------|------------|----|-------|--------|-------|----------|----------|----------|----------|-------|---------|
| 18 | C5-20TE-18 | 27 | 5-1/2 | 29-1/2 | 8-1/2 | 10-7/8 | 6-11/16 | 6-11/16 | 21 | 8-1/2 | 39.4 |
| 20 | C5-20TE-20 | 29 | 5-1/2 | 31-1/2 | 8-1/2 | 11-1/8 | 7-3/8 | 7-3/8 | 22-7/8 | 8-1/2 | 42 |
| 24 | C5-20TE-24 | 33 | 5-1/2 | 35-1/2 | 8-1/2 | 11-5/8 | 8-11/16 | 8-11/16 | 26-11/16 | 8-1/2 | 45.6 |
| 30 | C5-20TE-30 | 39 | 5-1/2 | 41-1/2 | 8-1/2 | 12-5/16 | 10-11/16 | 10-11/16 | 32-1/2 | 8-1/2 | 51.8 |
| 36 | C5-20TE-36 | 45 | 5-1/2 | 47-1/2 | 8-1/2 | 13 | 12-11/16 | 12-11/16 | 38-3/16 | 8-1/2 | 58 |
| 42 | C5-20TE-42 | 51 | 6-1/2 | 53-1/2 | 9-1/2 | 14-1/8 | 14-11/16 | 14-11/16 | 44 | 9 | 78.1 |
| 48 | C5-20TE-48 | 57 | 6-1/2 | 59-1/2 | 9-1/2 | 14-13/16 | 16-11/16 | 16-11/16 | 49-13/16 | 9 | 85.8 |
| 54 | C5-20TE-54 | 63 | 8 | 65-1/2 | 11 | 15-13/16 | 18-11/16 | 18-11/16 | 55-1/2 | 9-1/4 | 101 |
| 60 | C5-20TE-60 | 69 | 8 | 71-1/2 | 11 | 16-1/2 | 20-11/16 | 20-11/16 | 61-5/16 | 9-1/4 | 109.4 |

35° CEMA C Trough Assembly — 5" Roll Diameter

| Belt Width | Part No. | A | B | C | D | E | F | G | H | K | Wt (lb) |
|------------|------------|----|-------|--------|-------|----------|----------|----------|----------|-------|---------|
| 18 | C5-35TE-18 | 27 | 5-1/2 | 29-1/2 | 8-1/2 | 12-5/8 | 6-11/16 | 6-11/16 | 19-5/16 | 8-1/2 | 41.2 |
| 20 | C5-35TE-20 | 29 | 5-1/2 | 31-1/2 | 8-1/2 | 13 | 7-3/8 | 7-3/8 | 21-1/8 | 8-1/2 | 44 |
| 24 | C5-35TE-24 | 33 | 5-1/2 | 35-1/2 | 8-1/2 | 13-11/16 | 8-11/16 | 8-11/16 | 24-1/2 | 8-1/2 | 47.6 |
| 30 | C5-35TE-30 | 39 | 5-1/2 | 41-1/2 | 8-1/2 | 14-7/8 | 10-11/16 | 10-11/16 | 29-13/16 | 8-1/2 | 54.2 |
| 36 | C5-35TE-36 | 45 | 5-1/2 | 47-1/2 | 8-1/2 | 16 | 12-11/16 | 12-11/16 | 35-1/8 | 8-1/2 | 60.7 |
| 42 | C5-35TE-42 | 51 | 6-1/2 | 53-1/2 | 9-1/2 | 17-5/8 | 14-11/16 | 14-11/16 | 40-3/8 | 9 | 84.3 |
| 48 | C5-35TE-48 | 57 | 6-1/2 | 59-1/2 | 9-1/2 | 18-13/16 | 16-11/16 | 16-11/16 | 45-5/8 | 9 | 92.4 |
| 54 | C5-35TE-54 | 63 | 8 | 65-1/2 | 11 | 20-5/16 | 18-11/16 | 18-11/16 | 50-7/8 | 9-1/4 | 107.7 |
| 60 | C5-35TE-60 | 69 | 8 | 71-1/2 | 11 | 21-3/8 | 20-11/16 | 20-11/16 | 56-3/16 | 9-1/4 | 116.5 |

45° CEMA C Trough Assembly — 5" Roll Diameter

| Belt Width | Part No. | A | B | C | D | E | F | G | H | K | Wt (lb) |
|------------|------------|----|-------|--------|-------|----------|----------|----------|----------|-------|---------|
| 18 | C5-45TE-18 | 27 | 5-1/2 | 29-1/2 | 8-1/2 | 13-11/16 | 6-11/16 | 6-11/16 | 18-5/8 | 8-1/2 | 42.7 |
| 20 | C5-45TE-20 | 29 | 5-1/2 | 31-1/2 | 8-1/2 | 14-1/8 | 7-3/8 | 7-3/8 | 20-3/16 | 8-1/2 | 45.5 |
| 24 | C5-45TE-24 | 33 | 5-1/2 | 35-1/2 | 8-1/2 | 15-1/8 | 8-11/16 | 8-11/16 | 23-3/8 | 8-1/2 | 49.4 |
| 30 | C5-45TE-30 | 39 | 5-1/2 | 41-1/2 | 8-1/2 | 16-1/2 | 10-11/16 | 10-11/16 | 28-3/16 | 8-1/2 | 59.4 |
| 36 | C5-45TE-36 | 45 | 5-1/2 | 47-1/2 | 8-1/2 | 18 | 12-11/16 | 12-11/16 | 33 | 8-1/2 | 66.1 |
| 42 | C5-45TE-42 | 51 | 6-1/2 | 53-1/2 | 9-1/2 | 19-13/16 | 14-11/16 | 14-11/16 | 37-7/8 | 9 | 86.6 |
| 48 | C5-45TE-48 | 57 | 6-1/2 | 59-1/2 | 9-1/2 | 21-3/16 | 16-11/16 | 16-11/16 | 42-11/16 | 9 | 94.9 |
| 54 | C5-45TE-54 | 63 | 8 | 65-1/2 | 11 | 23 | 18-11/16 | 18-11/16 | 47-1/2 | 9-1/4 | 110.4 |
| 60 | C5-45TE-60 | 69 | 8 | 71-1/2 | 11 | 24-3/8 | 20-11/16 | 20-11/16 | 52-3/8 | 9-1/4 | 119.4 |

MANTIS C Troughing Assemblies 6"

20° CEMA C Trough Assembly — 6" Roll Diameter

| Belt Width | Part No. | A | B | C | D | E | F | G | H | K | Wt (lb) |
|------------|------------|----|-------|--------|-------|----------|----------|----------|----------|-------|---------|
| 20 | C6-20TE-20 | 29 | 5-1/2 | 31-1/2 | 8-1/2 | 11-11/16 | 7-3/8 | 7-3/8 | 22-13/16 | 9 | 46.2 |
| 24 | C6-20TE-24 | 33 | 5-1/2 | 35-1/2 | 8-1/2 | 12-1/8 | 8-11/16 | 8-11/16 | 26-3/8 | 9 | 50.1 |
| 30 | C6-20TE-30 | 39 | 5-1/2 | 41-1/2 | 8-1/2 | 12-13/16 | 10-11/16 | 10-11/16 | 32-1/8 | 9 | 57.2 |
| 36 | C6-20TE-36 | 45 | 5-1/2 | 47-1/2 | 8-1/2 | 13-1/2 | 12-11/16 | 12-11/16 | 37-7/8 | 9 | 64.1 |
| 42 | C6-20TE-42 | 51 | 6-1/2 | 53-1/2 | 9-1/2 | 14-5/8 | 14-11/16 | 14-11/16 | 43-11/16 | 9-1/2 | 85 |
| 48 | C6-20TE-48 | 57 | 6-1/2 | 59-1/2 | 9-1/2 | 15-5/16 | 16-11/16 | 16-11/16 | 49-3/8 | 9-1/2 | 93.6 |
| 54 | C6-20TE-54 | 63 | 8 | 65-1/2 | 11 | 16-5/16 | 18-11/16 | 18-11/16 | 55-3/16 | 9-3/4 | 109.5 |
| 60 | C6-20TE-60 | 69 | 8 | 71-1/2 | 11 | 17 | 20-11/16 | 20-11/16 | 60-7/8 | 9-3/4 | 118.7 |

35° CEMA C Trough Assembly — 6" Roll Diameter

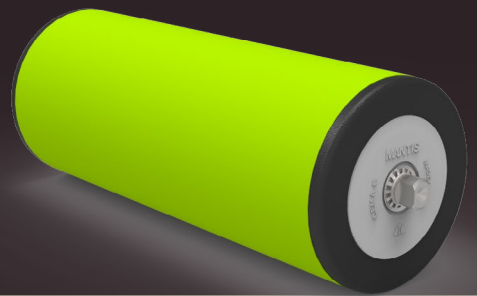
| Belt Width | Part No. | A | B | C | D | E | F | G | H | K | Wt (lb) |
|------------|------------|----|-------|--------|-------|----------|----------|----------|----------|-------|---------|
| 20 | C6-35TE-20 | 29 | 5-1/2 | 31-1/2 | 8-1/2 | 13-7/8 | 7-3/8 | 7-3/8 | 18-7/8 | 9 | 48.2 |
| 24 | C6-35TE-24 | 33 | 5-1/2 | 35-1/2 | 8-1/2 | 14-1/8 | 8-11/16 | 8-11/16 | 23-7/8 | 9 | 52.2 |
| 30 | C6-35TE-30 | 39 | 5-1/2 | 41-1/2 | 8-1/2 | 15-5/16 | 10-11/16 | 10-11/16 | 29-3/16 | 9 | 59.5 |
| 36 | C6-35TE-36 | 45 | 5-1/2 | 47-1/2 | 8-1/2 | 16-3/8 | 12-11/16 | 12-11/16 | 34-1/2 | 9 | 66.8 |
| 42 | C6-35TE-42 | 51 | 6-1/2 | 53-1/2 | 9-1/2 | 18 | 14-11/16 | 14-11/16 | 39-13/16 | 9-1/2 | 91.2 |
| 48 | C6-35TE-48 | 57 | 6-1/2 | 59-1/2 | 9-1/2 | 19-3/16 | 16-11/16 | 16-11/16 | 45 | 9-1/2 | 100.1 |
| 54 | C6-35TE-54 | 63 | 8 | 65-1/2 | 11 | 20-11/16 | 18-11/16 | 18-11/16 | 50-5/16 | 9-3/4 | 116.2 |
| 60 | C6-35TE-60 | 69 | 8 | 71-1/2 | 11 | 21-13/16 | 20-11/16 | 20-11/16 | 55-5/8 | 9-3/4 | 125.8 |

45° CEMA C Trough Assembly — 6" Roll Diameter

| Belt Width | Part No. | A | B | C | D | E | F | G | H | K | Wt (lb) |
|------------|------------|----|-------|--------|-------|----------|----------|----------|----------|-------|---------|
| 20 | C6-45TE-20 | 29 | 5-1/2 | 31-1/2 | 8-1/2 | 14-1/2 | 7-3/8 | 7-3/8 | 19-1/2 | 9 | 49.7 |
| 24 | C6-45TE-24 | 33 | 5-1/2 | 35-1/2 | 8-1/2 | 15-1/2 | 8-11/16 | 8-11/16 | 22-11/16 | 9 | 54 |
| 30 | C6-45TE-30 | 39 | 5-1/2 | 41-1/2 | 8-1/2 | 17 | 10-11/16 | 10-11/16 | 27-1/2 | 9 | 64.7 |
| 36 | C6-45TE-36 | 45 | 5-1/2 | 47-1/2 | 8-1/2 | 18-1/2 | 12-11/16 | 12-11/16 | 32-5/16 | 9 | 72.2 |
| 42 | C6-45TE-42 | 51 | 6-1/2 | 53-1/2 | 9-1/2 | 20-3/16 | 14-11/16 | 14-11/16 | 37-3/16 | 9-1/2 | 93.5 |
| 48 | C6-45TE-48 | 57 | 6-1/2 | 59-1/2 | 9-1/2 | 21-5/8 | 16-11/16 | 16-11/16 | 42 | 9-1/2 | 102.6 |
| 54 | C6-45TE-54 | 63 | 8 | 65-1/2 | 11 | 23-3/8 | 18-11/16 | 18-11/16 | 46-13-16 | 9-3/4 | 118.9 |
| 60 | C6-45TE-60 | 69 | 8 | 71-1/2 | 11 | 24-13/16 | 20-11/16 | 20-11/16 | 51-11/16 | 9-3/4 | 128.7 |



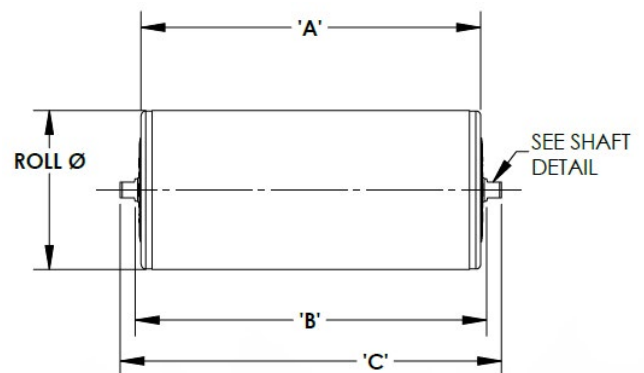
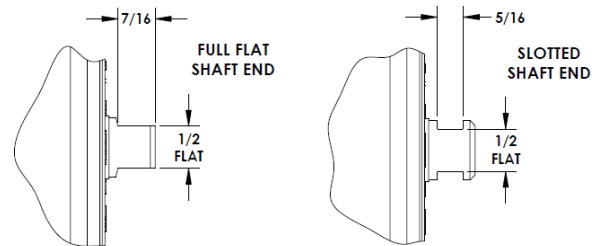
MANTIS CONVEYOR PRODUCTS® by NHI



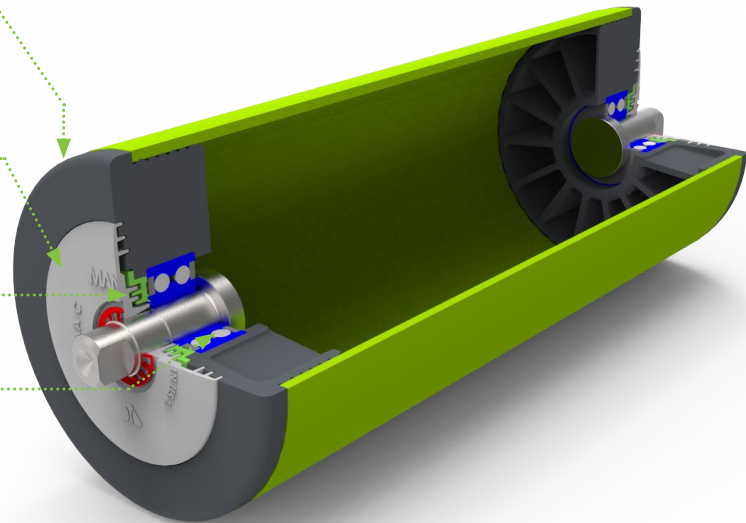
CEMA C Idlers

Idlers are equipped with heavy duty 5204 Double Row Ball Bearings, larger than the industry standard 6204, for increased load capacity and extended life. These larger bearings are sealed with NHI's proprietary Defender® Triple Lip Seals for enhanced contamination resistance, and grease retention.

- Patent Pending design.
- Steel Shell with Composite Bearing Housing for improved bearing retention and corrosion resistance



1. **Composite Bearing Housing** provides corrosion resistance while also eliminating the co-axiality issues caused by deep drawn stamped pockets as used in many competitor products.
2. **External Stationary End Cap** with integral labyrinth seal designed to prevent large contaminants from entering while also letting liquid debris to expel.
3. **Secondary Internal Labyrinth Seal** with contact lip prevents contaminants from reaching bearings.
4. **Proprietary Defender® Bearings** sized larger than industry standard, for improved capacity and extended life. These bearings feature a proprietary seal design for superior contaminant resistance and grease retention.



Part Numbering **XX-XX-XX-X**

CEMA Series
C

Roll Diameter
C - 4, 5, 6

Frame Configuration
TE - Equal Length
Troughing

Shaft End
No suffix - Full flat
S - Slotted

Belt Width
C - 18-60"

MANTIS CEMA C Idlers

CEMA C Idler 4"

| Belt Width | Part No. Full Flat | Part No. Slotted ends | A | B | C | Wt (lb) |
|------------|--------------------|-----------------------|----------|----------|---------|---------|
| 18 | C4-TE-18 | C4-TE-18-S | 6-11/16 | 7-1/16 | 8-1/16 | 4.8 |
| 20 | C4-TE-20 | C4-TE-20-S | 7-3/8 | 7-13/16 | 8-11/16 | 5.3 |
| 24 | C4-TE-24 | C4-TE-24-S | 8-11/16 | 9-1/16 | 10-1/16 | 5.6 |
| 30 | C4-TE-30 | C4-TE-30-S | 10-11/16 | 11--1/16 | 12-1/16 | 6.4 |
| 36 | C4-TE-36 | C4-TE-36-S | 12-11/16 | 13-1/16 | 14-1/16 | 7.2 |
| 42 | C4-TE-42 | C4-TE-42-S | 14-11/16 | 15-1/16 | 16-1/16 | 8.1 |
| 48 | C4-TE-48 | C4-TE-48-S | 16-11/16 | 17-1/16 | 18-1/16 | 8.9 |
| 54 | C4-TE-54 | C4-TE-54-S | 18-11/16 | 19-1/16 | 20-1/16 | 9.7 |
| 60 | C4-TE-60 | C4-TE-60-S | 20-11/16 | 21-1/16 | 22-1/16 | 10.6 |

CEMA C Idler 5"

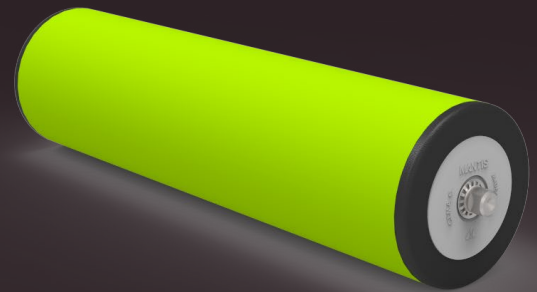
| Belt Width | Part No. Full Flat | Part No. Slotted ends | A | B | C | Wt (lb) |
|------------|--------------------|-----------------------|----------|---------|---------|---------|
| 18 | C5-TE-18 | C5-TE-18-S | 6-11/16 | 7-1/16 | 8-1/16 | 6.5 |
| 20 | C5-TE-20 | C5-TE-20-S | 7-3/8 | 7-13/16 | 8-11/16 | 7.2 |
| 24 | C5-TE-24 | C5-TE-24-S | 8-11/16 | 9-1/16 | 10-1/16 | 7.8 |
| 30 | C5-TE-30 | C5-TE-30-S | 10-11/16 | 11-1/16 | 12-1/16 | 9.1 |
| 36 | C5-TE-36 | C5-TE-36-S | 12-11/16 | 13-1/16 | 14-1/16 | 10.3 |
| 42 | C5-TE-42 | C5-TE-42-S | 14-11/16 | 15-1/16 | 16-1/16 | 11.6 |
| 48 | C5-TE-48 | C5-TE-48-S | 16-11/16 | 17-1/16 | 18-1/16 | 12.9 |
| 54 | C5-TE-54 | C5-TE-54-S | 18-11/16 | 19-1/16 | 20-1/16 | 14.2 |
| 60 | C5-TE-60 | C5-TE-60-S | 20-11/16 | 21-1/16 | 22-1/16 | 15.5 |

CEMA C Idler 6"

| Belt Width | Part No. Full Flat | Part No. Slotted ends | A | B | C | Wt (lb) |
|------------|--------------------|-----------------------|----------|---------|---------|---------|
| 20 | C6-TE-20 | C6-TE-20-S | 7-3/8 | 7-13/16 | 8-11/16 | 8.8 |
| 24 | C6-TE-24 | C6-TE-24-S | 8-11/16 | 9-1/16 | 10-1/16 | 9.3 |
| 30 | C6-TE-30 | C6-TE-30-S | 10-11/16 | 11-1/16 | 12-1/16 | 10.8 |
| 36 | C6-TE-36 | C6-TE-36-S | 12-11/16 | 13-1/16 | 14-1/16 | 12.4 |
| 42 | C6-TE-42 | C6-TE-42-S | 14-11/16 | 15-1/16 | 16-1/16 | 13.9 |
| 48 | C6-TE-48 | C6-TE-48-S | 16-11/16 | 17-1/16 | 18-1/16 | 15.5 |
| 54 | C6-TE-54 | C6-TE-54-S | 18-11/16 | 19-1/16 | 20-1/16 | 17 |
| 60 | C6-TE-60 | C6-TE-60-S | 20-11/16 | 21-1/16 | 22-1/16 | 18.6 |



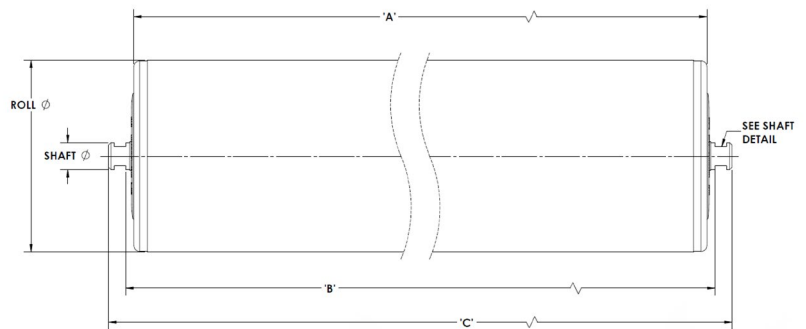
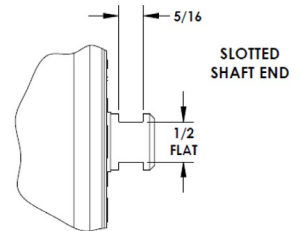
MANTIS CONVEYOR PRODUCTS® by NHI



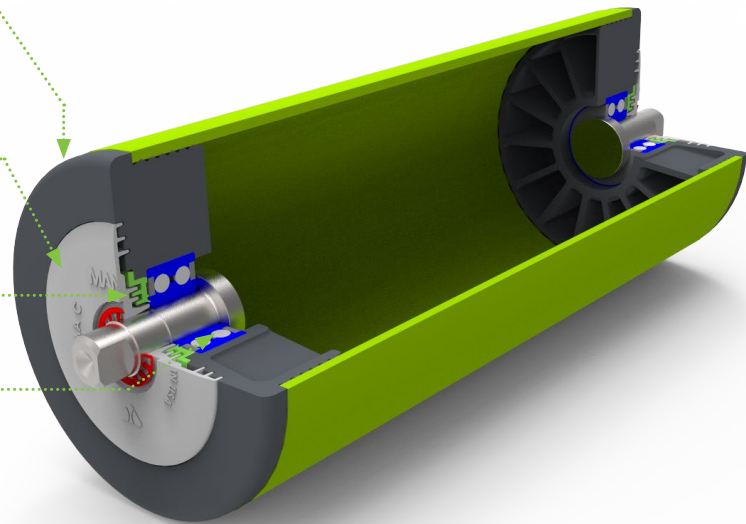
CEMA C Return Idler

Utilizing the same Composite Bearing Housing, Bearing, and Seal design as our CEMA C Equal Troughing Idlers to provide long life under the harshest conditions.

- Patent Pending design.
- Steel Shell with Composite Bearing Housing for improved bearing retention and corrosion resistance



- 1. Composite Bearing Housing** provides corrosion resistance while also eliminating the co-axiality issues caused by deep drawn stamped pockets as used in many competitor products.
- 2. External Stationary End Cap** with integral labyrinth seal designed to prevent large contaminants from entering while also letting liquid debris to expel.
- 3. Secondary Internal Labyrinth Seal** with contact lip prevents contaminants from reaching bearings.
- 4. Proprietary Defender® Bearings** sized larger than industry standard, for improved capacity and extended life. These bearings feature a proprietary seal design for superior contaminant resistance and grease retention.



Return Part Numbering **XX-X-XX**

CEMA Series
C

Roll Diameter
C - 4, 5, 6

Belt Width
C - 18-60"

R - Return roll

MANTIS CEMA C Return Idler

CEMA C Return Idler 4"

| Belt Width | Part No. Full Flat | A | B | C | Wt (lb) |
|------------|--------------------|--------|--------|--------|---------|
| 18 | C4-R-18 | 21-1/4 | 21-5/8 | 22-1/2 | 10.8 |
| 20 | C4-R-20 | 23-1/4 | 23-5/8 | 24-1/2 | 11.6 |
| 24 | C4-R-24 | 27-1/4 | 27-5/8 | 28-1/2 | 13.3 |
| 30 | C4-R-30 | 33-1/4 | 33-5/8 | 34-1/2 | 15.8 |
| 36 | C4-R-36 | 39-1/4 | 39-5/8 | 40-1/2 | 18.3 |
| 42 | C4-R-42 | 45-1/4 | 45-5/8 | 46-1/2 | 20.8 |
| 48 | C4-R-48 | 51-1/4 | 51-5/8 | 52-1/2 | 23.3 |
| 54 | C4-R-54 | 57-1/4 | 57-5/8 | 58-1/2 | 25.8 |
| 60 | C4-R-60 | 63-1/4 | 63-5/8 | 64-1/2 | 28.3 |

CEMA C Return Idler 5"

| Belt Width | Part No. | A | B | C | Wt (lb) |
|------------|----------|--------|--------|--------|---------|
| 18 | C5-R-18 | 21-1/4 | 21-5/8 | 22-1/2 | 16.0 |
| 320 | C5-R-20 | 23-1/4 | 23-5/8 | 24-1/2 | 17.2 |
| 24 | C5-R-24 | 27-1/4 | 27-5/8 | 28-1/2 | 19.9 |
| 30 | C5-R-30 | 33-1/4 | 33-5/8 | 34-1/2 | 23.8 |
| 36 | C5-R-36 | 39-1/4 | 39-5/8 | 40-1/2 | 27.8 |
| 42 | C5-R-42 | 45-1/4 | 45-5/8 | 46-1/2 | 31.7 |
| 48 | C5-R-48 | 51-1/4 | 51-5/8 | 52-1/2 | 35.6 |
| 54 | C5-R-54 | 57-1/4 | 57-5/8 | 58-1/2 | 39.5 |
| 60 | C5-R-60 | 63-1/4 | 63-5/8 | 64-1/2 | 43.4 |

CEMA C Return Idler 6"

| Belt Width | Part No. | A | B | C | Wt (lb) |
|------------|----------|--------|--------|--------|---------|
| 20 | C6-R-20 | 23-1/4 | 23-5/8 | 24-1/2 | 20.8 |
| 24 | C6-R-24 | 27-1/4 | 27-5/8 | 28-1/2 | 24.0 |
| 30 | C6-R-30 | 33-1/4 | 33-5/8 | 34-1/2 | 28.7 |
| 36 | C6-R-36 | 39-1/4 | 39-5/8 | 40-1/2 | 33.4 |
| 42 | C6-R-42 | 45-1/4 | 45-5/8 | 46-1/2 | 38.1 |
| 48 | C6-R-48 | 51-1/4 | 51-5/8 | 52-1/2 | 42.8 |
| 54 | C6-R-54 | 57-1/4 | 57-5/8 | 58-1/2 | 47.5 |
| 60 | C6-R-60 | 63-1/4 | 63-5/8 | 64-1/2 | 52.2 |



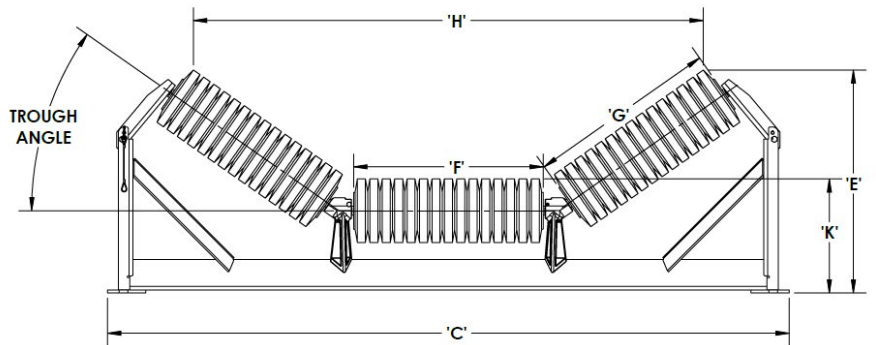
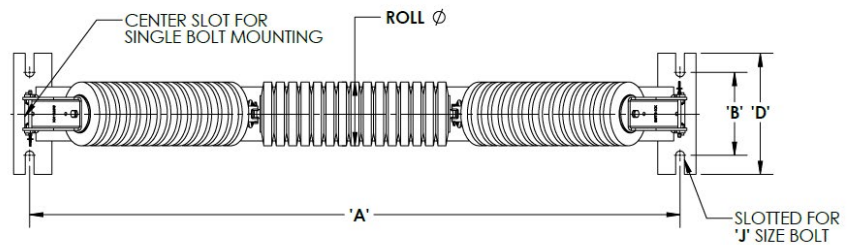
MANTIS CONVEYOR PRODUCTS® by NHI

CEMA C Impact Troughing Assemblies

CEMA C Impact Trough Assemblies use the same tool-less roller replacement method as our standard Mantis TRIM Series™ troughing assembly, allowing for quick roller change when needed.

These assemblies are designed to minimize damage to the belt and underlying frame structure by absorbing impact energy through use of natural rubber rings on the outer diameter of the roller.

- Reinforced frame
- Equipped with MANTIS B/C Impact Idlers.
- Standard with Mantis TRIM system



Trough Part Numbering

XX-XXXXXX-XX

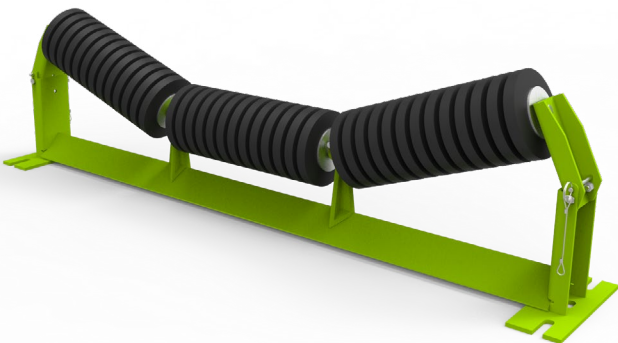
CEMA Series
C

Roll Diameter
C - 4, 5, 6

Troughing Angle
20°, 35°

Belt Width
C - 18 to 60"

Frame Configuration
TEI - Equal Length Troughing Impact



MANTIS CEMA C Impact Troughing Assemblies 4”

20° Impact Troughing Assembly — 4” Roll Diameter

| Belt Width | Part No. | A | B | C | D | E | F | G | H | K | Wt (lb) |
|------------|-------------|----|-------|--------|-------|----------|----|----|----------|-------|---------|
| 18 | C4-20TEI-18 | 27 | 5-1/2 | 29-1/2 | 8-1/2 | 10-1/2 | 7 | 7 | 21-5/16 | 8 | 38.3 |
| 24 | C4-20TEI-24 | 33 | 5-1/2 | 35-1/2 | 8-1/2 | 11-3/16 | 9 | 9 | 27-1/8 | 8 | 45.4 |
| 30 | C4-20TEI-30 | 39 | 5-1/2 | 41-1/2 | 8-1/2 | 11-7/8 | 11 | 11 | 32-13/16 | 8 | 52.5 |
| 36 | C4-20TEI-36 | 45 | 5-1/2 | 47-1/2 | 8-1/2 | 12-1/2 | 13 | 13 | 38-5/8 | 8 | 59.6 |
| 42 | C4-20TEI-42 | 51 | 6-1/2 | 53-1/2 | 9-1/2 | 13-11/16 | 15 | 15 | 44-3/8 | 8-1/2 | 80.5 |
| 48 | C4-20TEI-48 | 57 | 6-1/2 | 59-1/2 | 9-1/2 | 14-5/16 | 17 | 17 | 50-1/8 | 8-1/2 | 89.2 |
| 54 | C4-20TEI-54 | 63 | 8 | 65-1/2 | 11 | 15-3/8 | 19 | 19 | 55-7/8 | 8-3/4 | 105.2 |
| 60 | C4-20TEI-60 | 69 | 8 | 71-1/2 | 11 | 16-1/8 | 21 | 21 | 61-5/8 | 8-3/4 | 114.6 |

35° Impact Troughing Assembly — 4” Roll Diameter

| Belt Width | Part No. | A | B | C | D | E | F | G | H | K | Wt (lb) |
|------------|-------------|----|-------|--------|-------|---------|----|----|----------|-------|---------|
| 18 | C4-35TEI-18 | 27 | 5-1/2 | 29-1/2 | 8-1/2 | 12-3/16 | 7 | 7 | 19-13/16 | 8 | 40.2 |
| 24 | C4-35TEI-24 | 33 | 5-1/2 | 35-1/2 | 8-1/2 | 13-5/16 | 9 | 9 | 25-1/8 | 8 | 47.5 |
| 30 | C4-35TEI-30 | 39 | 5-1/2 | 41-1/2 | 8-1/2 | 14-1/2 | 11 | 11 | 30-3/8 | 8 | 54.9 |
| 36 | C4-35TEI-36 | 45 | 5-1/2 | 47-1/2 | 8-1/2 | 15-5/8 | 13 | 13 | 35-11/16 | 8 | 62.3 |
| 42 | C4-35TEI-42 | 51 | 6-1/2 | 53-1/2 | 9-1/2 | 17-3/16 | 15 | 15 | 40-7/8 | 8-1/2 | 86.7 |
| 48 | C4-35TEI-48 | 57 | 6-1/2 | 59-1/2 | 9-1/2 | 18-3/8 | 17 | 17 | 46-3/16 | 8-1/2 | 95.7 |
| 54 | C4-35TEI-54 | 63 | 8 | 65-1/2 | 11 | 19-7/8 | 19 | 19 | 51-1/2 | 8-3/4 | 112 |
| 60 | C4-35TEI-60 | 69 | 8 | 71-1/2 | 11 | 21 | 21 | 21 | 56-13/16 | 8-3/4 | 121.6 |

45° Impact Troughing Assembly — 4” Roll Diameter

| Belt Width | Part No. | A | B | C | D | E | F | G | H | K | Wt (lb) |
|------------|-------------|----|-------|--------|-------|----------|----|----|----------|-------|---------|
| 18 | C4-45TEI-18 | 27 | 5-1/2 | 29-1/2 | 8-1/2 | 13-3/16 | 7 | 7 | 19-5/16 | 8 | 41.7 |
| 24 | C4-45TEI-24 | 33 | 5-1/2 | 35-1/2 | 8-1/2 | 14-13/16 | 9 | 9 | 24-1/8 | 8 | 49.2 |
| 30 | C4-45TEI-30 | 39 | 5-1/2 | 41-1/2 | 8-1/2 | 16-3/16 | 11 | 11 | 28-7/8 | 8 | 60 |
| 36 | C4-45TEI-36 | 45 | 5-1/2 | 47-1/2 | 8-1/2 | 17-5/8 | 13 | 13 | 33-11/16 | 8 | 67.7 |
| 42 | C4-45TEI-42 | 51 | 6-1/2 | 53-1/2 | 9-1/2 | 19-1/2 | 15 | 15 | 38-5/8 | 8-1/2 | 89 |
| 48 | C4-45TEI-48 | 57 | 6-1/2 | 59-1/2 | 9-1/2 | 20-9/10 | 17 | 17 | 43-3/8 | 8-1/2 | 98.3 |
| 54 | C4-45TEI-54 | 63 | 8 | 65-1/2 | 11 | 22-5/8 | 19 | 19 | 48-3/16 | 8-3/4 | 114.7 |
| 60 | C4-45TEI-60 | 69 | 8 | 71-1/2 | 11 | 24-1/8 | 21 | 21 | 53-1/8 | 8-3/4 | 124.6 |

MANTIS CEMA C Impact Troughing Assemblies 5”

20° Impact Troughing Assembly — 4” Roll Diameter

| Belt Width | Part No. | A | B | C | D | E | F | G | H | K | Wt (lb) |
|------------|-------------|----|-------|--------|-------|----------|----|----|----------|-------|---------|
| 18 | C5-20TEI-18 | 27 | 5-1/2 | 29-1/2 | 8-1/2 | 11-1/8 | 7 | 7 | 20-7/8 | 8-1/2 | 43.4 |
| 24 | C5-20TEI-24 | 33 | 5-1/2 | 35-1/2 | 8-1/2 | 11-13/16 | 9 | 9 | 26-11/16 | 8-1/2 | 52 |
| 30 | C5-20TEI-30 | 39 | 5-1/2 | 41-1/2 | 8-1/2 | 12-5/16 | 11 | 11 | 32-3/8 | 8-1/2 | 60.6 |
| 36 | C5-20TEI-36 | 45 | 5-1/2 | 47-1/2 | 8-1/2 | 13-1/8 | 13 | 13 | 38-3/16 | 8-1/2 | 69.2 |
| 42 | C5-20TEI-42 | 51 | 6-1/2 | 53-1/2 | 9-1/2 | 14-5/16 | 15 | 15 | 43-7/8 | 9 | 91.5 |
| 48 | C5-20TEI-48 | 57 | 6-1/2 | 59-1/2 | 9-1/2 | 15 | 17 | 17 | 49-11/16 | 9 | 101.7 |
| 54 | C5-20TEI-54 | 63 | 8 | 65-1/2 | 11 | 15-7/8 | 19 | 19 | 55-1/2 | 9-1/4 | 119.1 |
| 60 | C5-20TEI-60 | 69 | 8 | 71-1/2 | 11 | 16-5/8 | 21 | 21 | 61-3/16 | 9-1/4 | 129.9 |

35° Impact Troughing Assembly — 5” Roll Diameter

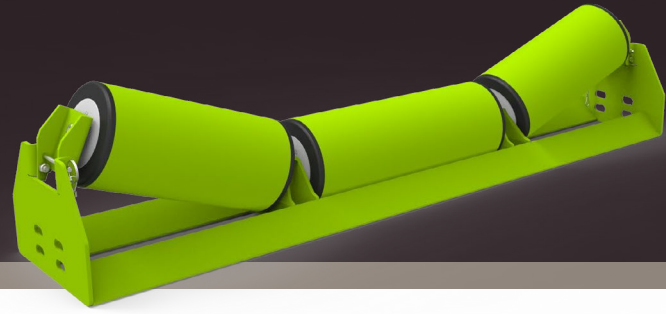
| Belt Width | Part No. | A | B | C | D | E | F | G | H | K | Wt (lb) |
|------------|-------------|----|-------|--------|-------|----------|----|----|----------|-------|---------|
| 18 | C5-35TEI-18 | 27 | 5-1/2 | 29-1/2 | 8-1/2 | 12-11/16 | 7 | 7 | 19-3/16 | 8-1/2 | 45.3 |
| 24 | C5-35TEI-24 | 33 | 5-1/2 | 35-1/2 | 8-1/2 | 13-4/5 | 9 | 9 | 24-1/2 | 8-1/2 | 54.1 |
| 30 | C5-35TEI-30 | 39 | 5-1/2 | 41-1/2 | 8-1/2 | 15 | 11 | 11 | 29-13/16 | 8-1/2 | 63 |
| 36 | C5-35TEI-36 | 45 | 5-1/2 | 47-1/2 | 8-1/2 | 16-1/8 | 13 | 13 | 35-1/8 | 8-1/2 | 71.8 |
| 42 | C5-35TEI-42 | 51 | 6-1/2 | 53-1/2 | 9-1/2 | 17-13/16 | 15 | 15 | 40-5/16 | 9 | 97.2 |
| 48 | C5-35TEI-48 | 57 | 6-1/2 | 59-1/2 | 9-1/2 | 18-9/10 | 17 | 17 | 45-5/8 | 9 | 108.2 |
| 54 | C5-35TEI-54 | 63 | 8 | 65-1/2 | 11 | 20-5/16 | 19 | 19 | 50-7/8 | 9-1/4 | 125.9 |
| 60 | C5-35TEI-60 | 69 | 8 | 71-1/2 | 11 | 21-1/2 | 21 | 21 | 56-3/16 | 9-1/4 | 137 |

45° Impact Troughing Assembly — 5” Roll Diameter

| Belt Width | Part No. | A | B | C | D | E | F | G | H | K | Wt (lb) |
|------------|-------------|----|-------|--------|-------|----------|----|----|----------|-------|---------|
| 18 | C5-45TEI-18 | 27 | 5-1/2 | 29-1/2 | 8-1/2 | 13-3/8 | 7 | 7 | 18-5/8 | 8-1/2 | 47.8 |
| 24 | C5-45TEI-24 | 33 | 5-1/2 | 35-1/2 | 8-1/2 | 14-13/16 | 9 | 9 | 23-3/8 | 8-1/2 | 55.8 |
| 30 | C5-45TEI-30 | 39 | 5-1/2 | 41-1/2 | 8-1/2 | 16-3/16 | 11 | 11 | 28-3/16 | 8-1/2 | 68.2 |
| 36 | C5-45TEI-36 | 45 | 5-1/2 | 47-1/2 | 8-1/2 | 17-5/8 | 13 | 13 | 33 | 8-1/2 | 77.3 |
| 42 | C5-45TEI-42 | 51 | 6-1/2 | 53-1/2 | 9-1/2 | 19-1/2 | 15 | 15 | 37-7/8 | 9 | 103 |
| 48 | C5-45TEI-48 | 57 | 6-1/2 | 59-1/2 | 9-1/2 | 20-7/8 | 17 | 17 | 42-11/16 | 9 | 110.8 |
| 54 | C5-45TEI-54 | 63 | 8 | 65-1/2 | 11 | 22-5/8 | 19 | 19 | 47-1/2 | 9-1/4 | 128.5 |
| 60 | C5-35TEI-60 | 69 | 8 | 71-1/2 | 11 | 24-1/8 | 21 | 21 | 52-3/8 | 9-1/4 | 139.9 |



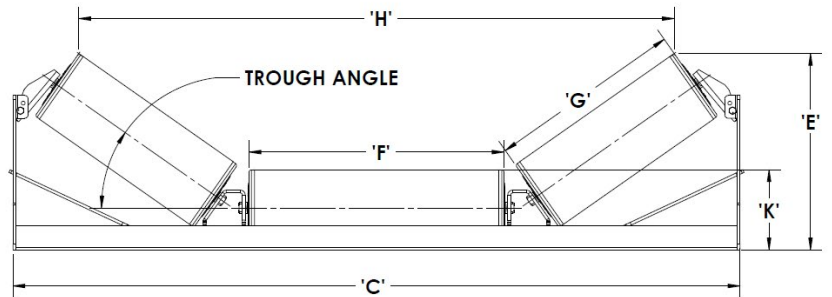
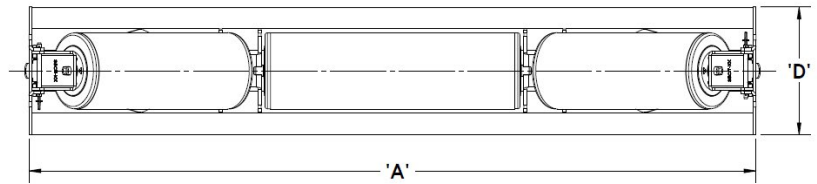
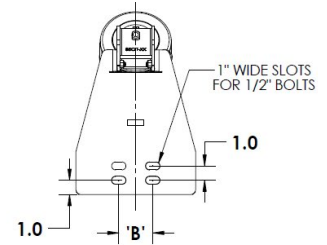
MANTIS CONVEYOR PRODUCTS® by NHI



CEMA C Channel Inset Troughing Assemblies

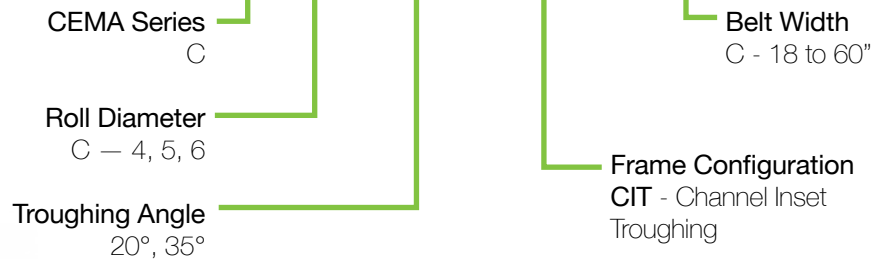
CEMA C Channel Inset Assemblies utilize the same tool-less roller changeover methods as our standard Mantis TRIM Series™ troughing assemblies, allowing for quick roller change when needed. All assemblies incorporate dual angles to prevent twisting under loading and ensure your conveyor will run longer and more efficiently.

- Dual angle base and hollow center braces minimize surface area beneath the rollers to prevent debris build up on frame.
- Equipped with MANTIS's Patent Pending CEMA C idlers for increased load capacity and extended life.
- Uses the same MANTIS TRIM design as the CEMA C troughing assemblies for ease of maintenance.
- Symmetrical frame design provides simpler installation over directional frames by eliminating cantilevered load issues.
- Simply Pull the Ring Pin
- Pivot the Upper Channel outward
- Pull the Wing Roller out and up
- Reverse the process to securely lock the new roller in place, simple as that.



Channel Inset Part Numbering

XX-XXXX-XX



Mantis C Channel Inset Troughing Assemblies

20° Channel Inset Trough Assembly — 4" Roll Diameter

| Belt Width | Part No. | A | B | C | D | E | F | G | H | K | Wt (lb) |
|------------|-------------|--------|---------|--------|-------|--------|----------|----------|---------|---------|---------|
| 18 | C4-20CIT-18 | 23-5/8 | 4-11/16 | 23-5/8 | 8-3/8 | 6-5/8 | 6-11/16 | 5-1/8 | 18-1/8 | 4-11/16 | 32.6 |
| 24 | C4-20CIT-24 | 29-5/8 | 4-11/16 | 29-5/8 | 8-3/8 | 7-3/16 | 9-5/8 | 6-11/16 | 24-1/8 | 4-11/16 | 38.8 |
| 30 | C4-20CIT-30 | 35-5/8 | 4-11/16 | 35-5/8 | 8-3/8 | 7-7/8 | 11-7/8 | 8-11/16 | 30-1/8 | 4-11/16 | 45.1 |
| 36 | C4-20CIT-36 | 41-5/8 | 4-11/16 | 41-5/8 | 8-3/8 | 8-1/2 | 14-1/8 | 10-11/16 | 36-1/8 | 4-11/16 | 51.4 |
| 42 | C4-20CIT-42 | 47-5/8 | 4-11/16 | 47-5/8 | 8-3/8 | 9-3/16 | 16-3/8 | 12-11/16 | 42-3/16 | 4-11/16 | 57.7 |
| 48 | C4-20CIT-48 | 53-5/8 | 4-11/16 | 53-5/8 | 8-3/8 | 9-7/8 | 18-5/8 | 14-11/16 | 48-1/8 | 4-11/16 | 64.2 |
| 54 | C4-20CIT-54 | 59-5/8 | 4-11/16 | 59-5/8 | 8-3/8 | 10-5/8 | 20-13/16 | 16-11/16 | 54-1/8 | 4-11/16 | 70.5 |
| 60 | C4-20CIT-60 | 65-5/8 | 4-11/16 | 65-5/8 | 8-3/8 | 11-1/4 | 23-1/8 | 18-11/16 | 60-1/8 | 4-11/16 | 76.8 |

35° Channel Inset Trough Assembly — 4" Roll Diameter

| Belt Width | Part No. | A | B | C | D | E | F | G | H | K | Wt (lb) |
|------------|-------------|--------|---------|--------|-------|----------|----------|----------|----------|---------|---------|
| 18 | C4-35CIT-18 | 23-5/8 | 4-11/16 | 23-5/8 | 8-3/8 | 8 | 6-11/16 | 5 | 16-7/8 | 4-11/16 | 31.7 |
| 24 | C4-35CIT-24 | 29-5/8 | 4-11/16 | 29-5/8 | 8-3/8 | 9 | 9-1/2 | 6-11/16 | 22-1/2 | 4-11/16 | 38 |
| 30 | C4-35CIT-30 | 35-5/8 | 4-11/16 | 35-5/8 | 8-3/8 | 10-1/8 | 12-11/16 | 8-11/16 | 29 | 4-11/16 | 45.3 |
| 36 | C4-35CIT-36 | 41-5/8 | 4-11/16 | 41-5/8 | 8-3/8 | 11-5/16 | 14-11/16 | 10-11/16 | 34-5/16 | 4-11/16 | 51.5 |
| 42 | C4-35CIT-42 | 47-5/8 | 4-11/16 | 47-5/8 | 8-3/8 | 12-1/2 | 16-11/16 | 12-11/16 | 39-5/8 | 4-11/16 | 58.2 |
| 48 | C4-35CIT-48 | 53-5/8 | 4-11/16 | 53-5/8 | 8-3/8 | 13-5/8 | 18-11/16 | 14-11/16 | 44-13/16 | 4-11/16 | 64.9 |
| 54 | C4-35CIT-54 | 59-5/8 | 4-11/16 | 59-5/8 | 8-3/8 | 14-11/16 | 20-11/16 | 16-11/16 | 50-1/8 | 4-11/16 | 71.3 |
| 60 | C4-35CIT-60 | 65-5/8 | 4-11/16 | 65-5/8 | 8-3/8 | 17 | 20-11/16 | 20-11/16 | 56-11/16 | 4-11/16 | 79.5 |

20° Channel Inset Trough Assembly — 5" Roll Diameter

| Belt Width | Part No. | A | B | C | D | E | F | G | H | K | Wt (lb) |
|------------|-------------|--------|--------|--------|-------|---------|----------|----------|----------|--------|---------|
| 18 | C5-20CIT-18 | 23-5/8 | 5-3/16 | 23-5/8 | 8-3/8 | 7-3/16 | 6-11/16 | 5-1/8 | 17-13/16 | 5-3/16 | 37.2 |
| 24 | C5-20CIT-24 | 29-5/8 | 5-3/16 | 29-5/8 | 8-3/8 | 7-11/16 | 9-5/8 | 6-11/16 | 23-13/16 | 5-3/16 | 44.7 |
| 30 | C5-20CIT-30 | 35-5/8 | 5-3/16 | 35-5/8 | 8-3/8 | 8-3/8 | 11-7/8 | 8-11/16 | 29-13/16 | 5-3/16 | 52.5 |
| 36 | C5-20CIT-36 | 41-5/8 | 5-3/16 | 41-5/8 | 8-3/8 | 9-1/8 | 14-1/8 | 10-11/16 | 35-13/16 | 5-3/16 | 60.2 |
| 42 | C5-20CIT-42 | 47-5/8 | 5-3/16 | 47-5/8 | 8-3/8 | 9-13/16 | 16-3/8 | 12-11/16 | 41-7/8 | 5-3/16 | 67.9 |
| 48 | C5-20CIT-48 | 53-5/8 | 5-3/16 | 53-5/8 | 8-3/8 | 10-1/2 | 18-5/8 | 14-11/16 | 47-13/16 | 5-3/16 | 75.8 |
| 54 | C5-20CIT-54 | 59-5/8 | 5-3/16 | 59-5/8 | 8-3/8 | 11-3/16 | 20-13/16 | 16-11/16 | 53-13/16 | 5-3/16 | 83.5 |
| 60 | C5-20CIT-60 | 65-5/8 | 5-3/16 | 65-5/8 | 8-3/8 | 11-7/8 | 23-1/8 | 18-11/16 | 59-13/16 | 5-3/16 | 91.2 |

35° Channel Inset Trough Assembly — 5" Roll Diameter

| Belt Width | Part No. | A | B | C | D | E | F | G | H | K | Wt (lb) |
|------------|-------------|--------|--------|--------|-------|----------|----------|----------|----------|--------|---------|
| 18 | C5-35CIT-18 | 23-5/8 | 5-3/16 | 23-5/8 | 8-3/8 | 8-3/8 | 6-11/16 | 5 | 16-3/8 | 5-3/16 | 36.2 |
| 24 | C5-35CIT-24 | 29-5/8 | 5-3/16 | 29-5/8 | 8-3/8 | 9-3/8 | 9-1/2 | 6-11/16 | 22 | 5-3/16 | 43.9 |
| 30 | C5-35CIT-30 | 35-5/8 | 5-3/16 | 35-5/8 | 8-3/8 | 10-5/8 | 12-11/16 | 8-11/16 | 28-11/16 | 5-3/16 | 52.8 |
| 36 | C5-35CIT-36 | 41-5/8 | 5-3/16 | 41-5/8 | 8-3/8 | 11-11/16 | 14-11/16 | 10-11/16 | 33-13/16 | 5-3/16 | 60.4 |
| 42 | C5-35CIT-42 | 47-5/8 | 5-3/16 | 47-5/8 | 8-3/8 | 12-7/8 | 16-11/16 | 12-11/16 | 39-1/8 | 5-3/16 | 68.4 |
| 48 | C5-35CIT-48 | 53-5/8 | 5-3/16 | 53-5/8 | 8-3/8 | 14 | 18-11/16 | 14-11/16 | 44-5/16 | 5-3/16 | 76.5 |
| 54 | C5-35CIT-54 | 59-5/8 | 5-3/16 | 59-5/8 | 8-3/8 | 15-1/8 | 20-11/16 | 16-11/16 | 49-5/8 | 5-3/16 | 84.3 |
| 60 | C5-35CIT-60 | 65-5/8 | 5-3/16 | 65-5/8 | 8-3/8 | 17-11/16 | 20-11/16 | 20-11/16 | 56-3/16 | 5-3/16 | 94.2 |

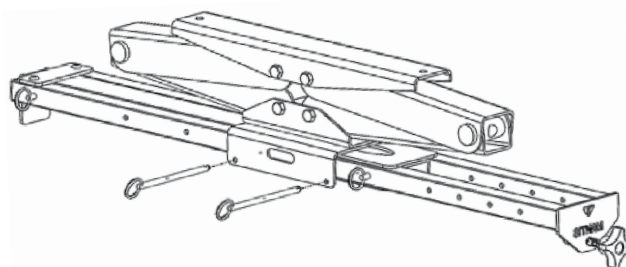
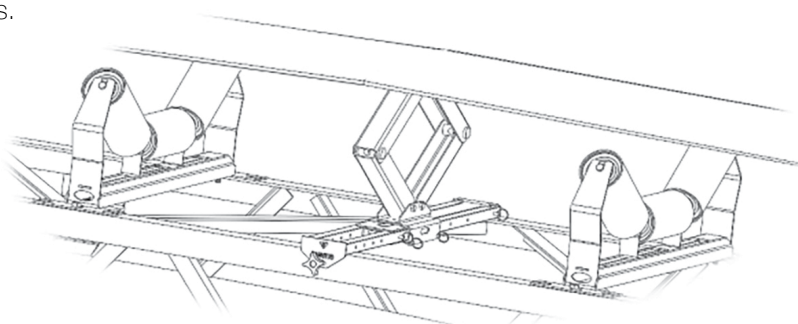


MANTIS CONVEYOR
PRODUCTS® by NHI

CONVEYOR BELT LIFT

Designed to assist with safe and efficient roller replacement by lifting the empty belt to allow easy access to the rollers.

- Easily lifts up to 300 lbs
- Eliminates the need for manual lifting
- No tools are required for belt width adjustment, just pull the ring pins and slide
- Works on standard belt widths from 18"-36"
- Only 31 lb for easy handling
- Uses a standard 3/4" Socket with Impact Driver or Ratchet
- Collapses to 7-1/4" Height x 39-1/2" Long x 4-1/2" Wide for minimal storage



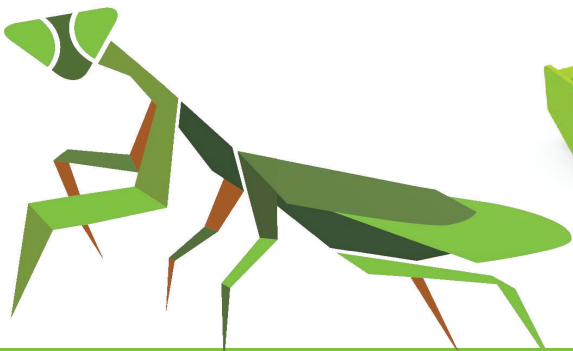
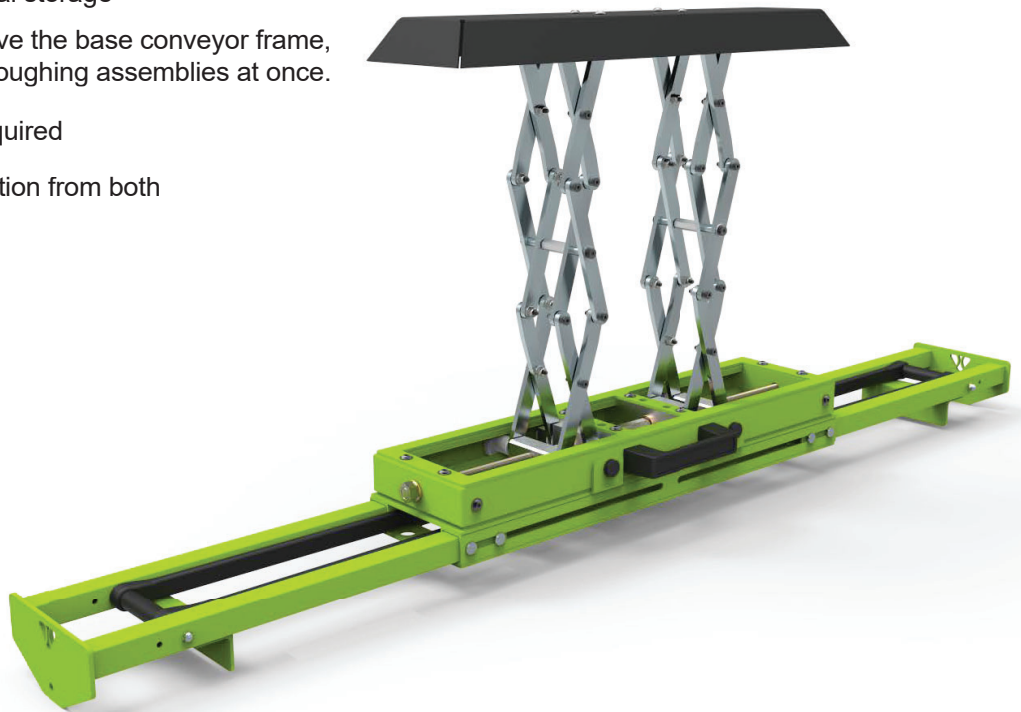
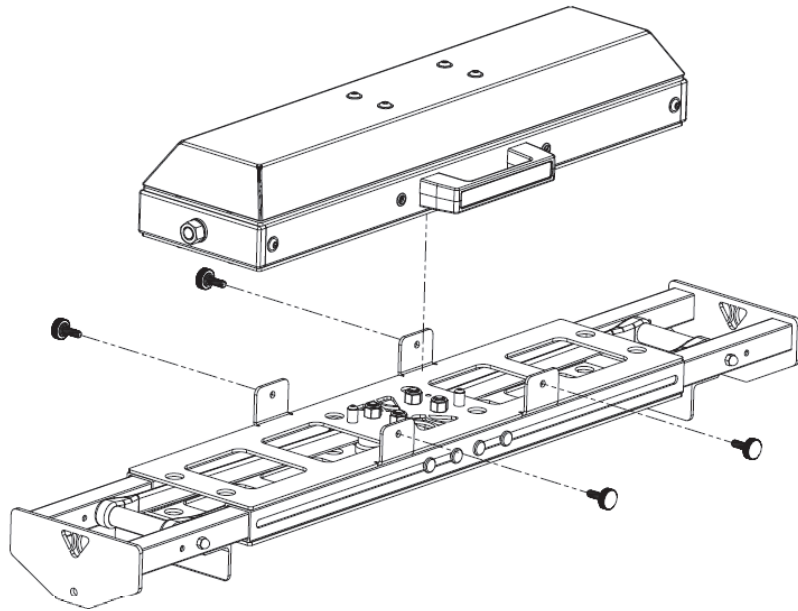


MANTIS CONVEYOR
PRODUCTS®

MANTISLift Pro

Designed to assist with safe and efficient replacement of full troughing assemblies and Idler rollers by lifting the empty belt for unobstructed access.

- Easily lifts up to 600 lbs
- Works on standard belt widths from 18"-42"
- 42 lb Total Weight. Can quickly be disassembled into two 21 lb components for easier handling
- Uses a standard 3/4" Socket with Impact Driver or Ratchet
- Collapses to under 7" Height x 32-1/2" Long x 7" Wide (excluding handle) for minimal storage
- Capable of lifting belt over 20" above the base conveyor frame, allowing easy access to multiple troughing assemblies at once.
- Easy width adjustment, no pins required
- Symmetric design allows for operation from both sides of the belt





MANTIS CONVEYOR
PRODUCTS®

Conveyor Belt Skirting

Our skirting is made of the most durable polyurethane and rubber compounds, ensuring it can withstand the harsh abrasion and impact of conveyed materials. With an effective seal between the belt and chute wall, our skirting reduces dust emissions and material loss, all while keeping your employees safe. With our skirting, you can enjoy increased efficiency, reduced maintenance costs, and a safer work environment.

- Offers wear life 8-10 times longer than rubber.
- Exhibits 60% lower friction coefficient than rubber, resulting in reduced drag on the conveyor motor.
- Prevents conveyor belt grooving.
- Lightweight and load-bearing.
- Can be tailored to function effectively in both wet and dry environments.
- Great for: Aggregate, Cement, Concrete, Coal mining, Coal fired power plants, Precious metal mining, Pulp and paper.



Standard Skirting

- Fits into any other manufacturers' existing skirt clamping systems on the market today
- Available in a variety of widths and thicknesses in lengths up to 50 feet
- Can be ordered with 35-degree beveled edges* or a straight edge



Duo Seal™ Skirting

- Material and dust containment in one solution
- Flexible secondary seal conforms to the belt to keep dust and particulate material under control
- Works with most existing skirt board clamping systems on the market
- Available in a variety of widths and thicknesses, in lengths up to 50 feet
- Rounded primary seal will work with any trough angle



Snap-Loc™ Dust Seal Skirting

- Snaps into standard unistrut railing that can be bolted or welded into place
- Engineered to create a perfect seal that follows the contours and low spots of the belt between trough rollers
- No additional adjustments needed for the life of the seal
- Available with cavity for use on high-speed belts



Load Zone Containment Liner

- Extra-rugged, reinforced design with 1/4" steel
- Available with flat edge or 20-degree beveled edge
- Plain liners come in 60" and 96" lengths; varying heights and thicknesses available
- 1" thick ceramic liners contain ceramic hextiles, while the 2" contains ceramic cubes
- Ceramic liners available with flat, 20° or 35° beveled edge, in lengths of 48 inches or 60 inches



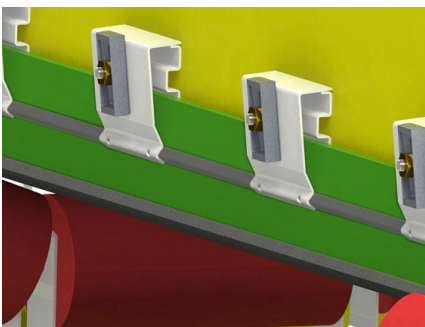
Combination Snap-Loc System

- Combination of Snap-Loc and Containment Liner work together to provide the ultimate dust control product
- Fits most conveyor systems on the market
- Excellent abrasion and high-temperature resistance
- Can be used with all belt widths and troughing angles



Fold-n-Seal™

- Quality, multi-sealing conveyor skirting solution
- Material and dust containment in one unique solution
- Primary seal keeps material on the belt while secondary seal keeps dust and particulate material under control



Wedge-Loc™

- Easy to install and adjust
- Stitch, weld, or bolt into place, install skirting, drop to belt, then knock wedges to lock down
- Frame made from 12-gauge, galvanized steel; clamping utilizes a stainless steel-to-brass thread contact, coupled with cast aluminum wedge for continuous operation in corrosive and abusive environments



MANTIS CONVEYOR
PRODUCTS® by NHI

NEW PRODUCTS

MANTIS Conveyor Products is always expanding our product offering, if you don't see what you're looking for please inquire.

- Picking Trough Assemblies
- Impact Beds
- Pillow Block Bearings
- Drum Pulleys
- Wing Pulleys

