

## **SUPER-SCREW**



PATENTED PRODUCT

**MADE IN FRANCE**

**Lacings / Heavy Industries**

**100% COMPATIBLE WITH**  
BELT CLEANERS, BELT TRACKERS AND  
TRANSFER POINTS FROM OUR RANGE\*





MLT : inventor and manufacturer of the first

# FLEXIBLE SPLICE TO SCREW



**GOODYEAR**  
RUBBER PRODUCTS, INC.

+1.727.342.5087

También puede enviarnos un correo electrónico a [ventas@goodyearrubberproducts.com](mailto:ventas@goodyearrubberproducts.com)



5 generations of flexible splice to screw



## Splice your belt simply with screws !

MLT is the original inventor and manufacturer of the **SUPER-SCREW®**, the only flexible screw splice, created in 1994. Our desire to go further in innovation and to always meet your needs has led the **MLT** teams to create new generations of **SUPER-SCREW®**.

When on-site, you are regularly exposed to field-based issues :

- need to minimize machine downtime as much as possible,
- difficult condition of access, harsh climatic conditions, challenged staff safety,
- overinvestment,
- need for skilled technicians leading to a lack of autonomy of the local staff, etc.

Screws allow the **SUPER-SCREW®** splice to be installed regardless of :

- the configuration of the conveyor,
- the conditions of access,
- weather conditions,
- temperature (from -80°C (-112°F) to 200°C (392°F) peak).

Furthermore, the screws are specifically designed as self-drilling and self-tapping : they separate the belt fibres without cutting.

This feedback inspires **MLT** teams on a daily basis, and makes them think about improving our products to offer you solutions that are always at the cutting edge of innovation. Based on these observations, **MLT** teams have developed a new generation of **SUPER-SCREW®**, unique and innovative splicing solutions for conveyor belts :

The **SUPER-SCREW®** range is performant, innovative and easy to install!





# SUPER-SCREW® RANGE

A wide choice for all your needs

## 5 UNIQUE SPLICES ON THE MARKET

In order to meet all your needs, the MLT teams have developed the SUPER-SCREW® range.

The inventor of the first flexible screw splice, the SUPER-SCREW®, offers you a wide range of choices for your screw splice system.

Discover a range of simple and fast splicing systems to meet all needs, constraints and requirements.

Find the SUPER-SCREW® splice that's right for you!



**SUPER-SCREW®**  
PRIMARY

Entry range



Temporary solution

Abrasion resistant (150 mm<sup>3</sup>)

**Packaging :**

available in roll of 25 m only

**Includes:**

- Spacers / 1 screw size / PZ bit



**SUPER-SCREW®**  
ORIGINAL

The historical product



Permanent solution

Abrasion resistant (50 mm<sup>3</sup>) | Heat resistant | Fire resistant | Oil resistant | Heat retardant | Very low temperature

**Packaging :**

- 85 - 105 : In roll of 5, 7.5 and 15 m.
- 125 - 250 : In roll of 3, 5, 10 and 15 m.
- In Kit, pre-assembled and cut to length, for belt widths of 800, 1000, 1200, 1400, 1600 mm.

**Includes:**

- Installation tools
- customization\*

Type	Thickness of the splice	
	Top	Bottom
35	4 mm (1/8'')	3.7 mm (1/8'')
63	5 mm (3/16'')	4 mm (1/8'')
80	6 mm (1/4'')	5 mm (3/16'')

Type	Thickness of the splice	
	Top	Bottom
85	7.5 mm (5/16'')	4.5 mm (3/16'')
100	7.5 mm (5/16'')	4.5 mm (3/16'')
105	9 mm (3 1/8'')	4.5 mm (3/16'')
125	6.5 mm (1/4'')	6 mm (1/4'')
127	8.5 mm (5/16'')	6 mm (1/4'')
140	6.5 mm (1/4'')	6 mm (1/4'')
145	8.5 mm (5/16'')	6 mm (1/4'')
160	6.5 mm (1/4'')	6 mm (1/4'')
165	8.5 mm (5/16'')	6 mm (1/4'')
180	6.5 mm (1/4'')	6 mm (1/4'')





## **SUPER-SCREW** EVOLUTION

The new generation



Permanent solution

Abrasion resistant (50 mm<sup>3</sup>) | Heat resistant |  
Fire resistant | Oil resistant | Heat retardant |  
Very low temperature | Food white

### Packaging :

- In roll of 3 or 5\*\*, 10 and 25 m
- In Kit, pre-assembled and cut to length, for belt widths of 500, 650, 800, 1000, 1200 mm.
- White food grade version available in 2000 mm length only

### Includes:

- Installation tools
- customization\*

Type	Thickness of the splice	
	Top	Bottom
35	3.5 mm (1/8'')	3 mm (1/8'')
50	4 mm (1/8'')	3 mm (1/8'')
63	6 mm (1/4'')	3 mm (1/8'')
80	6 mm (1/4'')	4.7 mm (3/16'')



## **SUPER-SCREW** SECURITY

The security (Security indicator)



Permanent solution

Abrasion resistant (50 mm<sup>3</sup>) | Heat resistant |  
Fire resistant | Oil resistant | Heat  
retardant | Very low temperature

### Packaging :

- 65 - 100 : In roll of 3 or 5\*\*, 10 and 25 m.
- 105 : In roll of 3 or 5\*\*, 10 and 15 m.
- In Kit, pre-assembled and cut to length, for belt widths of 650, 800, 1000, 1200, 1400 mm.

### Includes:

- Installation tools
- customization\*

Type	Thickness of the splice	
	Top	Bottom
65	6 mm (1/4'')	3 mm (1/8'')
85	8 mm (5/16'')	4.7 mm (3/16'')
100	8 mm (5/16'')	4.7 mm (3/16'')
105	10 mm (5/16'')	4.7 mm (3/16'')



## **SUPER-SCREW** PREMIUM

High performance (Polyurethane)



Permanent solution

Abrasion resistant (15 mm<sup>3</sup>) | Oil resistant

### Packaging :

- In Kit, pre-assembled and cut to length, for belt widths of 650, 800, 1000, 1200, 1400, 2000, 3000 mm.

### Includes:

- Installation tools
- Spacers / 2 screw sizes / PZ bit
- customization\*
- Easy Screw Solution

Type	Thickness of the splice	
	Top	Bottom
65	6 ou 8 mm (1/4 or 5/16'')	3 mm (1/8'')
85	8 ou 10 mm (5/16'')	4.7 mm (3/16'')
105	8 ou 10 mm (5/16'')	4.7 mm (3/16'')

# SUPER-SCREW®

## PRIMARY

### Temporary solution



+ In order to give everyone access to **SUPER-SCREW®** quality and technology, **MLT** teams have created the **SUPER-SCREW® PRIMARY**, the French-made flexible screw joint accessible to everybody.

This temporary splice will allow you an easy installation in any situation in only 2 hours.

### + Applications



Cement plants



Quarries and surface mines

### ABRASION RESISTANT

### THE ADVANTAGES

- Manufactured by the inventor of the SUPER-SCREW®
- Made in France
- Reduces downtime of your conveyor
- Easy and quick to install (1 to 2 persons)
- Self installation, low investment
- Leak proof and flexible
- Compatible with small pulley diameter
- Compatible with conveyor scrapers



### Steel screws and inserts

#### Steel screws and inserts

High resistance, it's the perfect choice for most applications.



Belt thickness before skiving	mm	3+1	4+1.5	5+1.5	4+2	5+3	6+2	6+3	8+3	10+3
	inch	1/8" + 1/32"	5/32" + 1/16"	5/32" + 1/16"	5/32" + 1/16"	5/32" + 1/8"	1/4" + 1/16"	1/4" + 1/8"	5/16" + 1/8"	3/8" + 1/8"

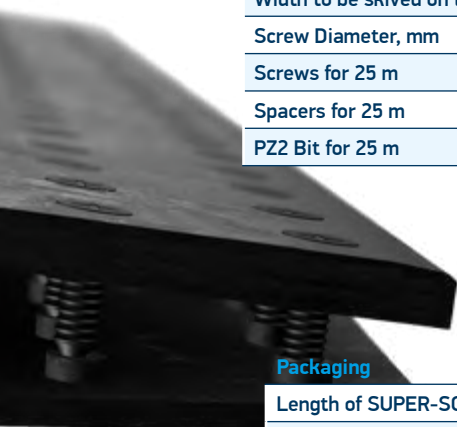
Skiving blades (mm)	3.5	4.5	4.5	4.5	2.5	4.5	3.5	6.5	2.5	6.5	3.5	8.5	3.5	10.5	3.5
---------------------	-----	-----	-----	-----	-----	-----	-----	-----	-----	-----	-----	-----	-----	------	-----

Type	Type of belt		Belt tension	Operating tension	Min pulley Ø, mm	Spacer	Screw dimensions									
			N/mm	PIW												
35	250/2	250/3	350	200	160	506	5 x 12									
	315/2	315/3														
	400/2	400/3														
63	500/3	500/4	630	360	200	508	5 x 14									
	630/2	630/3														
	630/4															
80	800/2	800/3	800	450	250		5 x 16									
	800/4															

		35	63	80
mm	Top Cover Thickness, mm (± 1 mm)	4	5	6
	Bottom Cover Thickness, mm (± 1 mm)	3.7	4	5
inch	Top Cover Thickness, inch	1/8"	3/16"	1/4"
	Bottom Cover Thickness, inch	1/8"	1/8"	3/16"
	Width of SUPER-SCREW®, mm (inch)	62 (2 1/2)	110 (4 1/4)	156 (6 1/8)
	Width to be skived on trailing edge, mm (inch)	26 (1 1/16)	50 (2)	73 (3)
	Width to be skived on leading edge, mm (inch)	36 (1 1/2)	60 (2 3/8)	83 (3 3/8)
	Screw Diameter, mm	5		
	Screws for 25 m	2750	5000	7000
	Spacers for 25 m	250	250	250
	PZ2 Bit for 25 m	25	25	25

Packaging

Packaging	35	63	80
Length of SUPER-SCREW®, m	25 m roll		
Spacers / screws / PZ bit	Included		





# SUPER-SCREW® ORIGINAL

## The historical product



**+** MLT is the inventor of the world's first flexible screw splice, created in 1994: the **SUPER-SCREW® ORIGINAL**.

Since then, this permanent endless system has proven its worth all over the world by offering a simple and quick installation in any situation.

### **+** Applications



Cement plants



Quarries and surface mines



Heavy industries



Underground mines

**ABRASION RESISTANT**

**OIL RESISTANT**

**HEAT RESISTANT\***

**FIRE RESISTANT**

**HEAT RETARDANT\*\***

**VERY LOW TEMPERATURE**

### THE ADVANTAGES

- Permanent solution
- Reduces downtime of your conveyor
- Optimizes your productivity
- Easy and quick to install (1 to 2 persons)
- Self installation, low investment
- Leak proof and flexible
- Compatible with small pulley diameter
- Compatible with conveyor scrapers



## Types of steel for screws and inserts available

### Steel screws and inserts

High resistance, it's the perfect choice for most applications :

**Quarries, Cement Plants, Mines, etc.**

### Stainless steel screws and inserts

For resistance in corrosive and saline applications :

**Gold mines, Phosphate mines, Sorting center, Fertilizer plant, Recycling facilities and salt handling**



Belt thickness before skiving						mm	6+2		6+3		8+3		10+3	
						inch	1/4" + 3/32"		1/4" + 1/8"		5/16" + 1/8"		3/8" + 1/8"	
Skiving blades (mm)							6.5	2.5	6.5	3.5	8.5	3.5	10.5	3.5
Type*	Type of belt		Belt tension	Operating tension	Min pulley Ø, mm	Spacer	Screw dimensions							
			N/mm	PIW										
85	800/2	800/3	800	450	250	508	5x16 - 5x18							
	800/4													
100	1000/3	1000/4	1000	570	300	508	5x18 - 5x20							
	1000/5	1000/6												
105	1000/3	1000/4	1000	570	330	508	5x20 - 5x22							
	1000/5	1000/6												
125	1250/3	1250/4	1250	710	350	612	6.3x19.5 - 6.3x21							
	1250/5	1250/6			400									
127	1250/3	1250/4	1250	710	400	612	6.3x21 - 6.3x22.5							
	1250/5	1250/6												
140	1400/3	1400/4	1400	800	350	612	6.3x19.5 - 6.3x21							
	1400/5													
145	1400/3	1400/4	1400	800	400	612	6.3x21 - 6.3x22.5							
	1400/5													
160	1600/4	1600/5	1600	914	350	612	6.3x21 - 6.3x22.5							
	1600/6				400									
165	1600/4	1600/5	1600	914	400	612	6.3x22.5 - 6.3x24							
	1600/6													
180	1800/5	1800/6	1800	1030	400	614	6.3x21 - 6.3x22.5							
185	1800/5	1800/6	1800	1030	500		6.3x22.5 - 6.3x24							
200	2000/5	2000/6	2000	1140	500	614	6.3x22.5 - 6.3x24							
205	2000/5	2000/6	2000	1140	650		6.3x24 - 6.3x25.5							
250	>2000		2500	>1430	800	616	6.3x27 - 6.3x28.5							

\*Our splicing solutions have been engineered for normal applications. For tough and abrasive environments, we encourage you to select an upper Super-Screw® size (please check specifications before)

	85	100	105	125	127	140	145	160	165	180	185	200	205	250
<b>mm</b>														
Top Cover Thickness, mm (± 1 mm)	7.5	7.5	9	6.5	8.5	6.5	8.5	6.5	8.5	6.5	8.5	8.5	10	10.5
Bottom Cover Thickness, mm (± 1 mm)	4.5			6								8		
<b>inch</b>														
Top Cover Thickness, inch	5/16	5/16	3 1/8	1/4	5/16	1/4	5/16	1/4	5/16	1/4	5/16	5/16	3/8	7/16
Bottom Cover Thickness, inch	3/16			1/4								5/16		
Width of SUPER-SCREW®, mm (inch)	156 (6 1/8)				266 (10 1/2)									
Width to be skived on trailing edge, mm (inch)	73 (2 7/8)				126 (4 15/16)									
Width to be skived on leading edge, mm (inch)	83 (3 1/4)				140 (5 1/2)									
Screw Diameter, mm	5				6.3									
	85 - 105					125 - 250								
Length of SUPER-SCREW®	1 m	3 m	5 m	10 m	25 m	1 m	3 m	5 m	7.5 m	15 m				
Number of screws required	280	840	1400	2800	7000	254	762	1270	1905	3810				
Number of PZ Bits required	1	3	5	10	25	1	3	5	8	15				

## Packaging

ROLL packaging	85 - 105				125 - 250					
	3 m roll	5 m roll	10 m roll	25 m roll	3 m roll	5 m roll	7.5 m roll	15 m roll		
Length of SUPER-SCREW®	to be ordered separately				to be ordered separately					
Spacers / screws / PZ bit	Included									
Installation tools	Included									
KIT packaging	85 - 250									
Belt width, mm (inch)	800 (31 1/2)		1000 (39 1/4)		1200 (48)		1400 (55)		1600 (63)	
Length of SUPER-SCREW®	830 (32 3/4)		1045 (41)		1245 (49)		1465 (57 3/4)		1660 (65 1/4)	

# SUPER-SCREW®

## EVOLUTION

The new generation



+ In order to always improve innovation, **MLT's** R&D teams have gone beyond the limits of the **SUPER-SCREW® ORIGINAL** to create a brand new generation of flexible screw joints, even more flexible and resistant: The **SUPER-SCREW® EVOLUTION**.

### + Applications



Cement plants



Quarries and surface mines



Heavy industries



Underground mines

**ABRASION RESISTANT**

**OIL RESISTANT**

**FOOD WHITE**

**HEAT RESISTANT\***

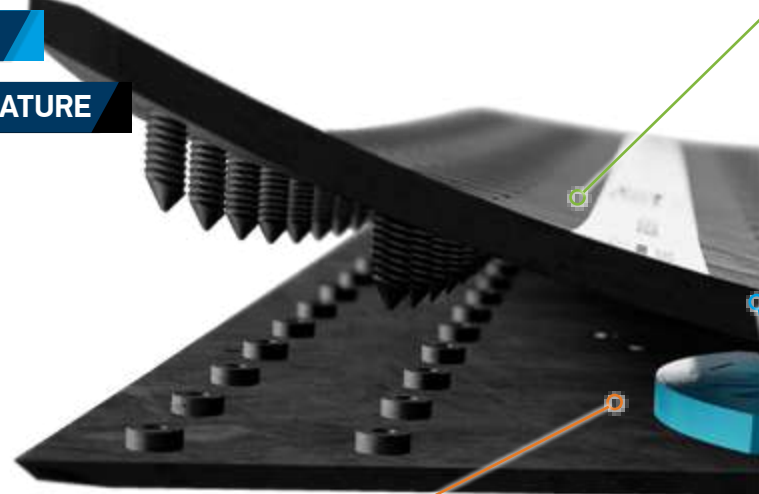
**FIRE RESISTANT**

**HEAT RETARDANT\*\***

**VERY LOW TEMPERATURE**

### THE ADVANTAGES

- Permanent solution
- More flexible, more resistant
- Perfect integration into the belt
- Reduce downtime
- Optimizes your productivity
- Easy and quick to install (1 to 2 persons)
- Self installation, low investment
- Leak proof and flexible
- Compatible with small pulley diameter
- Compatible with conveyor scrapers



#### Easier and faster to install

- Easy to cut out the splice
- Less screws for faster installation
- Easier skiving
- New spacers for equal skiving size on both sides

## Types of steel for screws and inserts available

### Steel screws and inserts

High resistance, it's the perfect choice for most applications :  
**Quarries, Cement Plants, Mines, etc.**

### Stainless steel screws and inserts

For resistance in corrosive and saline applications :  
**Gold mines, Phosphate mines, Sorting center, Fertilizer plant, Recycling facilities and salt handling**

## Technical data

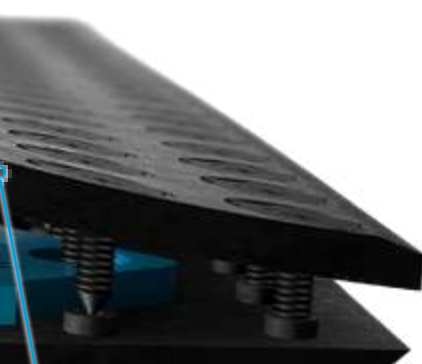
Belt thickness before skiving		mm	3+1.5	4+1.5	5+1.5	4+2	5+3	6+2	6+3	8+3					
		inch	1/8" +1/16"	5/32" +1/16"	3/16" +1/16"	5/32" +1/16"	3/16" +1/8"	1/4" +1/16"	1/4" +1/8"	5/16" +1/8"					
Skiving blades (mm)			3.5	4.5	4.5	4.5	2.5	4.5	3.5	6.5	2.5	6.5	3.5	8.5	3.5
Type*	Type of belt	Belt tension	Operating tension	Min pulley Ø, mm	Screw dimensions										
		N/mm	PIW												
35	250/2	350	200	160	5x10 - 5x12										
	250/3														
50***	400/2	630	360	180	5x12 - 5x14										
	400/3														
63	500/3														
	500/4														
80	630/2														
	630/3														
80	630/4														
	800/2	800	450	250	5x14 - 5x16										
800/3															
	800/4														

\*\*\*SS50 possible for EP630 4+2 belt

Spacers: One size spacer  
\*Our splicing solutions have been engineered for normal applications. For tough and abrasive environments, we encourage you to select an upper Super-Screw® size (please check specifications before)

### Fully integrated

- Smaller pulley diameters
- Better compatibility with scrapers



	35	50	63	80	
<b>mm</b>					
Top Cover Thickness, mm (± 1 mm)	3.5	4	6	6	
Bottom Cover Thickness, mm (± 1 mm)	3	3	3	4.7	
<b>inch</b>					
Top Cover Thickness, inch	1/8	5/32	1/4	1/4	
Bottom Cover Thickness, inch	1/8	1/8	1/8	3/16	
Width of SUPER-SCREW®, mm (inch)	72 (2 <sup>27/32</sup> )	116 (4 <sup>9/16</sup> )	116 (4 <sup>9/16</sup> )	160 (6 <sup>5/16</sup> )	
Width to be skived on trailing edge, mm (inch)	37 (1 <sup>15/32</sup> )	59 (2 <sup>5/16</sup> )	59 (2 <sup>5/16</sup> )	80 (3 <sup>5/32</sup> )	
Width to be skived on leading edge, mm (inch)	37 (1 <sup>15/32</sup> )	59 (2 <sup>5/16</sup> )	59 (2 <sup>5/16</sup> )	80 (3 <sup>5/32</sup> )	
Screw Diameter, mm	5				
Length of SUPER-SCREW®	1 m	3 m	5 m	10 m	25 m
	<b>35</b>				
Number of screws required	92	276	460	920	2300
Number of spacers required	4	12	20	40	100
Number of PZ Bits required	1	1	1	2	2
	<b>50 - 63</b>				
Number of screws required	184	552	920	1840	4600
Number of spacers required	4	12	20	40	100
Number of PZ Bits required	1	1	1	2	2
	<b>80</b>				
Number of screws required	276	828	1380	2760	6900
Number of spacers required	4	12	20	40	100
Number of PZ Bits required	1	1	1	2	2

### Thinner and more resistant

- Better integration into the belt
- Improved breaking strength
- Higher abrasion resistance
- More flexible splice

## Packaging

ROLL packaging	35 - 80				
Length of SUPER-SCREW®	3 m roll	5 m roll	10 m roll	25 m roll	
Installation tools / Spacers / PZ bit	Included				
Screws	to be ordered separately				
KIT packaging	35 - 80				
Belt width, mm (inch)	800 (31 <sup>1/2</sup> )	1000 (39 <sup>1/4</sup> )	1200 (48)	1400 (55)	1600 (63)
Length of SUPER-SCREW® mm (inch)	832 (31 <sup>3/4</sup> )	1057 (41 <sup>1/2</sup> )	1260 (49 <sup>1/2</sup> )	1462 (57 <sup>1/2</sup> )	1665 (65 <sup>1/2</sup> )
Installation tools / Spacers / PZ bit	Included				
Screws	Included				

## PERFECT INTEGRATION

Product specially designed for thin belts



# SUPER-SCREW®

## SECURITY

The first splice in the world with a safety indicator

+ In order to optimize your maintenance and your conveyor downtime, **MLT** teams have revolutionized the world of splicing with the **SUPER-SCREW® SECURITY**, equipped with a **safety indicator**.

This new system allows you to predict and then anticipate the time to change your splice, offering you a considerable reduction in downtime.



### + Applications



Cement plants



Quarries and surface mines



Heavy industries



Underground mines

**ABRASION RESISTANT**

**OIL RESISTANT**

**HEAT RESISTANT\***

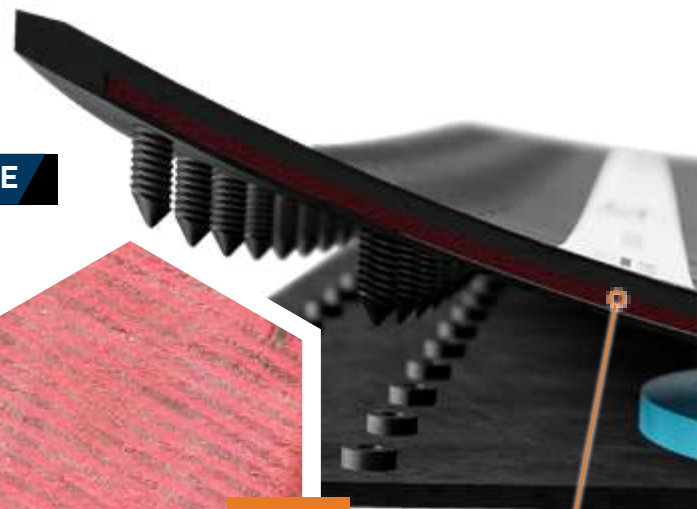
**FIRE RESISTANT**

**HEAT RETARDANT\*\***

**VERY LOW TEMPERATURE**

### THE ADVANTAGES

- Safety: red border visible when the junction must be replaced
- Permanent solution
- Perfect integration in the belt
- Optimizes your productivity
- Easy and quick to install (1 to 2 persons)
- Self installation, low investment
- Leak proof and flexible
- Compatible with small pulley diameter
- Compatible with conveyor scrapers



**NEW**

**WITH SAFETY INDICATOR**

## Types of steel for screws and inserts available

### Steel screws and inserts

High resistance, it's the perfect choice for most applications :  
**Quarries, Cement Plants, Mines, etc.**

### Stainless steel screws and inserts

For resistance in corrosive and saline applications :  
**Gold mines, Phosphate mines, Sorting center, Fertilizer plant, Recycling facilities and salt handling**

## Technical data

Belt thickness before skiving		mm		5+3		6+2		6+3		8+3		10+3	
		inch		3/16" + 1/8"		1/4" + 1/16"		1/4" + 1/8"		5/16" + 1/8"		3/8" + 1/8"	
Skiving blades (mm)				4,5	3,5	6,5	2,5	6,5	3,5	8,5	3,5	10,5	3,5
Type*	Type of belt		Belt tension	Operating tension	Min pulley Ø, mm	Screw dimensions							
			N/mm	PIW									
65	630/2	630/3	630	360	200	5x14 - 5x16							
	630/4												
85	800/2	800/3	800	450	250	5x16 - 5x18							
	800/4												
100	1000/3	1000/4	1000	570	300	5x18 - 5x20							
	1000/5	1000/6											
105	1000/3	1000/4	1000	570	350	5x20 - 5x22							
	1000/5	1000/6											

Spacers: One size spacer

\*Our splicing solutions have been engineered for normal applications. For tough and abrasive environments, we encourage you to select an upper Super-Screw® size (please check specifications before)

		65	85	100	105		
mm	Top Cover Thickness, mm (± 1 mm)	6	8	8	10		
	Bottom Cover Thickness, mm (± 1 mm)	3		4.7			
inch	Top Cover Thickness, inch	1/4	5/16	5/16	3/8		
	Bottom Cover Thickness, inch	1/8		3/16			
Width of SUPER-SCREW®, mm (inch)		116 (4 9/16)		160 (6 5/16)			
Width to be skived on trailing edge, mm (inch)		59 (2 5/16)		80 (3 1/8)			
Width to be skived on leading edge, mm (inch)		59 (2 5/16)		80 (3 1/8)			
Screw Diameter, mm		5					
Length of SUPER-SCREW®		1 m	3 m	5 m	10 m	15 m***	25 m
		<b>65</b>					
Number of screws required		184	552	920	1840		4600
Number of spacers required		4	12	20	40		100
Number of PZ Bits required		1	1	1	2		2
		<b>85 - 105</b>					
Number of screws required		276	828	1380	2760	4140	6900
Number of spacers required		4	12	20	40	60	100
Number of PZ Bits required		1	1	1	2	2	2

## Packaging

ROLL packaging		65 - 105				
Length of SUPER-SCREW®		3 m roll	5 m roll	10 m roll	15 m*** roll	25 m roll
Installation tools / Spacers / PZ bit		Included				
Screws		to be ordered separately				
KIT packaging		65 - 105				
Belt width, mm (inch)		650 (25 1/2)	800 (31 1/2)	1000 (39 1/4)	1200 (48)	1400 (55)
Length of SUPER-SCREW® mm (inch)		675 (26 1/2)	832 (31 3/4)	1057 (41 1/2)	1260 (49 1/2)	1462 (57 1/2)
Installation tools / Spacers / PZ bit		Included				
Screws		Included				

\*\*\*Note : SUPER-SCREW® SECURITY 105 only, for this model, maximum length of roll is 15 m.



**NEW**  
**SAFETY**  
**INDICATOR**

# SUPER-SCREW®

## PREMIUM

### The only flexible screw splice in **POLYURETHANE**



In order to meet the most extreme environments and the most demanding requirements, **MLT** created the **SUPER-SCREW® PREMIUM** : the first flexible splice to screw in **POLYURETHANE**, designed for extremely abrasive applications\*.

The polyurethane that composes the upper part of this new **SUPER-SCREW®** splice provides a considerable gain in abrasion resistance (15 mm<sup>3</sup>), while maintaining the flexibility, perfect integration and strength of **SUPER-SCREW®**.



#### Applications



Cement plants



Quarries and surface mines



Heavy industries



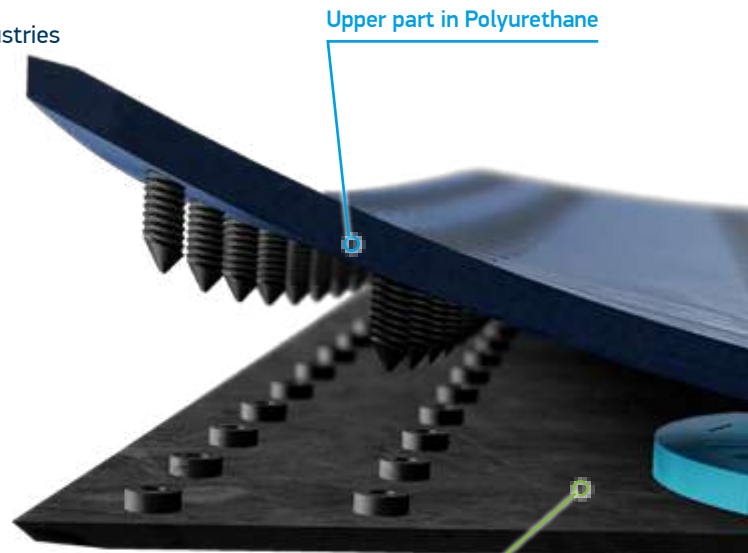
POLYURETHANE

UNIQUE ON THE MARKET

**VERY HIGH ABRASION RESISTANCE (15 mm<sup>3</sup>)**

#### THE ADVANTAGES

- Very high abrasion resistance (15 mm<sup>3</sup>)
- Polyurethane: reduced friction
- Permanent solution
- Reduces downtime of your conveyor
- Optimizes your productivity
- Easy and quick to install (1 to 2 persons)
- Self installation, low investment
- Leak proof and flexible
- Compatible with small pulley diameter
- Compatible with conveyor scrapers



Upper part in Polyurethane

Bottom part in rubber

### Types of steel for screws and inserts available



#### Steel screws and inserts

High resistance, it's the perfect choice for most applications :

**Quarries, Cement Plants, Mines, etc.**





## Technical data

Belt thickness before skiving		mm	6+2	6+3	8+3	10+3				
		inch	1/4" + 1/16"	1/4" + 1/8"	5/16" + 1/8"	3/8" + 1/8"				
Skiving blades (mm)			6.5	2.5	6.5	3.5	8.5	3.5	10.5	3.5
Type*	Type of belt	Belt tension	Operating tension	Min pulley Ø, mm	Screw dimensions					
		N/mm	PIW							
65 - 6mm	630/2 630/3	630	360	200	5x14 - 5x16					
	630/4									
65 - 8mm	630/2 630/3	630	360	230	5x16 - 5x18					
	630/4									
85 - 8mm	800/2 800/3	800	450	250	5x16 - 5x18					
	800/4									
85 - 10mm	800/2 800/3	800	450	300	5x18 - 5x20					
	630/4									
105 - 8mm	1000/3 1000/4	1000	570	300	5x18 - 5x20					
	1000/5 1000/6									
105 - 10mm	1000/3 1000/4	1000	570	350	5x20 - 5x22					
	1000/5 1000/6									

Spacers: One size spacer  
 \*Our splicing solutions have been engineered for normal applications. For tough and abrasive environments, we encourage you to select an upper Super-Screw® size (please check specifications before)

	65 - 6mm	65 - 8mm	85 - 8mm	85 - 10mm	105 - 8mm	105 - 10mm
<b>mm</b>						
Top Cover Thickness, mm (± 1 mm)	6	8	8	10	8	10
Bottom Cover Thickness, mm (± 1 mm)	3		4.7			
<b>inch</b>						
Top Cover Thickness, (inch)	1/4	5/16	5/16	3/8	5/16	3/8
Bottom Cover Thickness, (inch)	1/8		3/16			
Width of SUPER-SCREW®, mm (inch)	116 (4 9/16)		160 (6 5/16)			
Width to be skived on trailing edge, mm (inch)	58 (2 5/16)		80 (3 1/8)			
Width to be skived on leading edge, mm (inch)	58 (2 5/16)		80 (3 1/8)			
Screw Diameter, mm	5					

## Packaging

### KIT packaging

	65 - 105				
Belt width, mm (inch)	650 (25 1/2)	800 (31 1/2)	1000 (39 1/4)	1200 (48)	1400 (55)
Length of SUPER-SCREW®, mm (inch)	675 (26 1/2)	832 (31 3/4)	1057 (41 1/2)	1260 (49 1/2)	1462 (57 1/2)
Screws / Installation tools / Spacers / PZ bit	Included				



**NEW**

In order to optimize screwing time of the **SUPER-SCREW®**

**GOODYEAR**  
RUBBER PRODUCTS, INC.

+1.727.342.5087

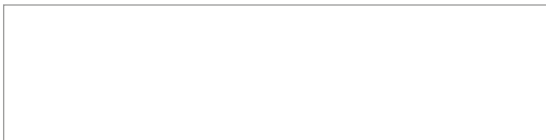
También puede enviarnos un correo electrónico a [ventas@goodyearrubberproducts.com](mailto:ventas@goodyearrubberproducts.com)



**SUPER-SCREW**

PATENTED PRODUCT  
MADE IN FRANCE

**MLT Minet Lacing Technology**  
More than 70 years of innovation  
at your service



 **MLT GROUP**  
Conveyor Solutions Expert

**GOODYEAR**  
RUBBER PRODUCTS, INC.

 +1.727.342.5087

También puede enviarnos un correo electrónico a  
[ventas@goodyearrubberproducts.com](mailto:ventas@goodyearrubberproducts.com)