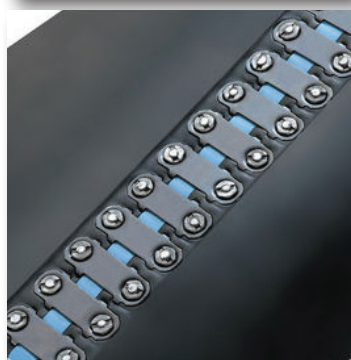
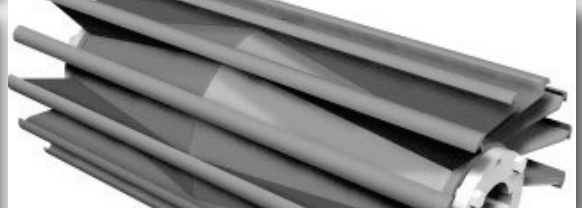


2024 Goodyear Conveyor Belt Division



Goodyear Rubber Products Conveyor Belt Division is located in Clearwater, Florida and serves our customers and branch locations throughout the state.

We also ship our domestic and international customers from this facility along with strategically located affiliated warehouses across the USA.



**Goodyear Rubber Products**  
11301 47th Street No., Clearwater, FL 33762  
(727) 822-4672 • Fax: (727) 821-8721  
Toll-Free: (800) 367-4673

[www.GoodyearBelting.com](http://www.GoodyearBelting.com)  
ENGLISH: [www.goodyearrubberproducts.us](http://www.goodyearrubberproducts.us)  
sales@goodyearrubberproducts.com  
SPANISH: [www.goodyearrubberproducts.lat](http://www.goodyearrubberproducts.lat)  
ventas@goodyearrubberproducts.com

*Technical Data Is Available On Both English & Spanish Websites (se habla español)*





## Heavy Duty Black Rubber Conveyor Belting by Goodyear Rubber Products

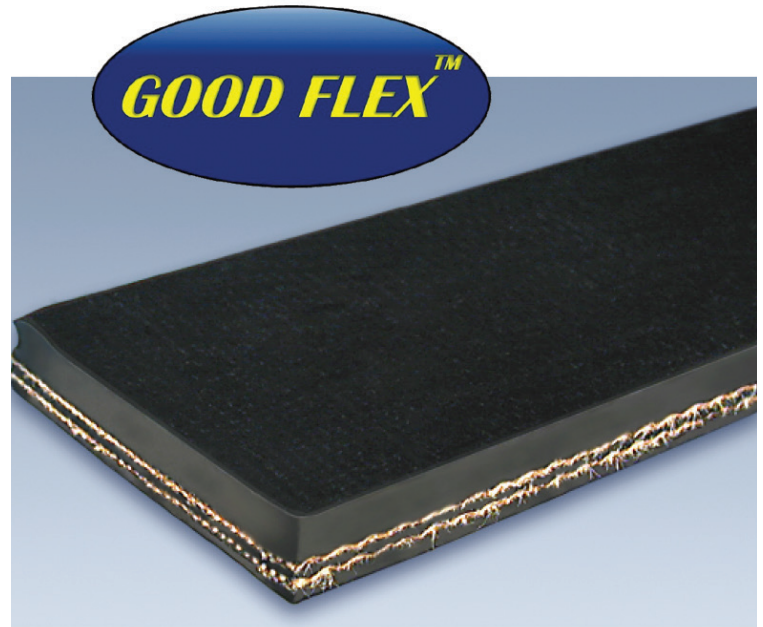
### Features:

This Heavy Duty Conveyor belt series features a minimum 10:1 PIW (per inch of width) breaking strength to working tension rating.

We utilize a Polyester / Nylon Carcass for limited stretch lengthwise (Polyester Warp) while providing the ultimate forgiveness and impact resistance the Nylon Weft Cords provide.

Available in a wide variety of constructions utilizing 110# PIW, 150# PIW and 200# PIW fabrics ratings and cover compounds that include SAR (Super Abrasion Resistant), RMA Grade One and Two, MOR, SCORF, MSHA Underground, 400 and 700 Degree High Temperature compounds along with combination Heat & Oil Resistant Compounds.

*We offer field installation and vulcanizing services in Florida.*



**Many options on cover thicknesses mean we may have the perfect belt available FROM STOCK!!**

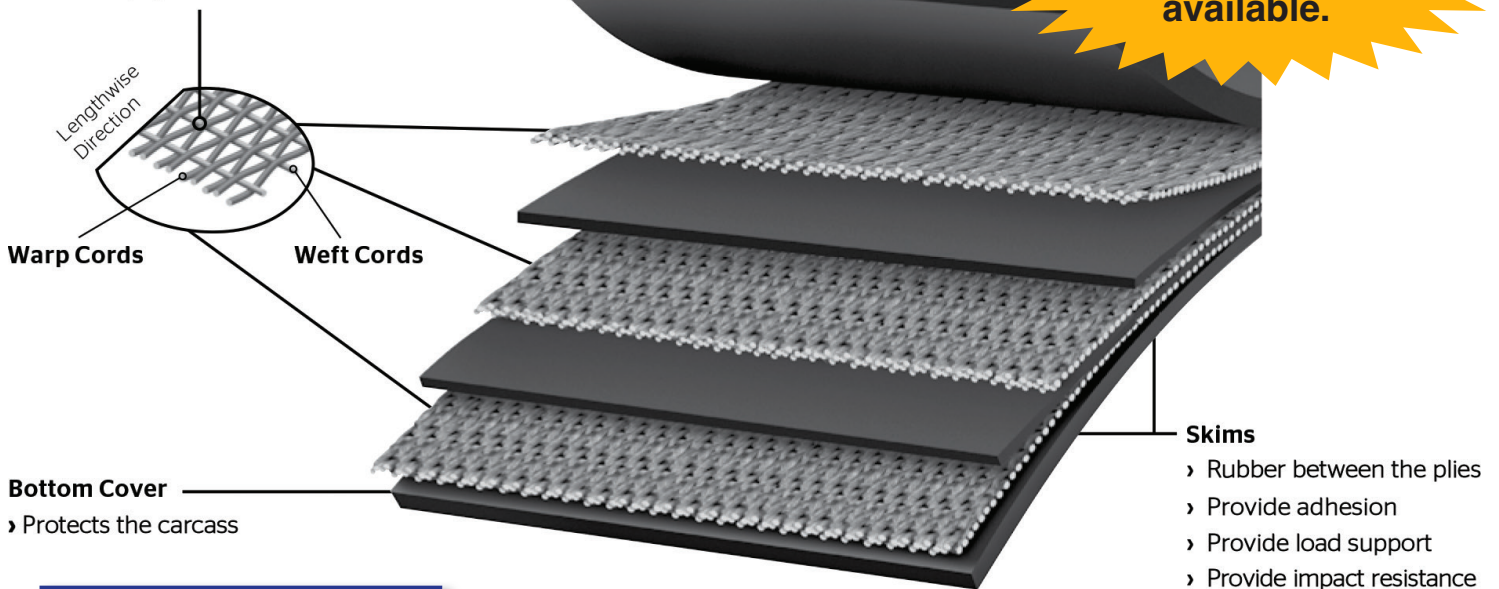
### Fabric Plies

- › Warp Cords - Provide tensile strength, transverse tear, impact resistance
- › Weft Cords - Provide fastener holding, impact resistance, rip and tear resistance

### Top Cover

- › Protects the carcass

**Installation  
& vulcanization  
available.**



### Skims

- › Rubber between the plies
- › Provide adhesion
- › Provide load support
- › Provide impact resistance

**GOODYEAR**  
RUBBER PRODUCTS, INC.

**Goodyear Rubber Products**

**11301 47th Street No., Clearwater, FL 33762**

**(727) 822-4672 • Fax: (727) 821-8721 • [www.GoodyearBelting.com](http://www.GoodyearBelting.com)**

**ENGLISH**

[www.goodyearrubberproducts.us](http://www.goodyearrubberproducts.us)

**Technical Data Is Available On Both English & Spanish Websites (se habla español)**

[sales@goodyearrubberproducts.com](mailto:sales@goodyearrubberproducts.com)

**SPANISH**

[www.goodyearrubberproducts.lat](http://www.goodyearrubberproducts.lat)

[ventas@goodyearrubberproducts.com](mailto:ventas@goodyearrubberproducts.com)



**Mechanical Belt Fasteners Combine Strength and Durability with Affordability and Easy Installation**



part#	box qty	type	min pulley	belt plies	belt thick	punch	wrench	bolt breaker	tape
140E	25	std	12"	2ply	3/16"-7/16"	HP1	HW1	110	FL7C
140C	100	std	12"	2ply	3/16"-7/16"	HP1	HW1	110	FL7C
140VPB	100	rubber coated	12"	2ply	3/16"-7/16"	HP1	HW1	110	FL7C
190E	25	std	16"	3ply	5/16"-9/16"	HP1	HW1	110	FL11C
190C	100	std	16"	3ply	5/16"-9/16"	HP1	HW1	110	FL11C
190VPB	100	rubber coated	16"	3ply	5/16"-9/16"	HP1	HW1	110	FL11C
190CMAP	100	abrasion resistant	16"	3ply	5/16"-9/16"	HP1	HW1	110	FL11C

No matter what you're moving, minimizing downtime and maximizing output are always top priorities—and they can be significantly affected by the way you splice your belts. Most belt conveyor operations rely on one or both common methods of splicing:

- Mechanical Belt Fastening - The process of joining belt ends by metal hinges or plates
- Vulcanization - The process of joining belt ends through heat or chemicals



**EASIER & FASTER TO INSTALL  
THINNER & MORE RESISTANT  
FULL INTEGRATED INTO YOUR BELT**

## Splice your belt simply with screws

SUPER-SCREW® EVOLUTION is the latest addition to the SUPER-SCREW® range. THE fast and innovative solution to splice your conveyor belts.

When on-site, you are exposed to field based issues:

- do you need to reduce the number of breakdowns?
- do you have difficult installation access?
- is your site prone to harsh weather conditions?
- do you have limited number of staff and training?

These comments from our customers drove the MLT teams to think about future improvements with these issues in mind. The result is we are able to offer highly innovative solutions, designed around our customer's feedback. Thus, MLT teams have developed the new generation of SUPER-SCREW®, unique

The new generation of flexible splice to screw



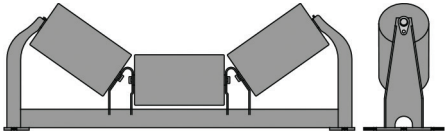
and innovative solution to splice your conveyor belt : the SUPER-SCREW® EVOLUTION.

The simplicity of screws allows you to install the SUPERSCREW® EVOLUTION no matter:

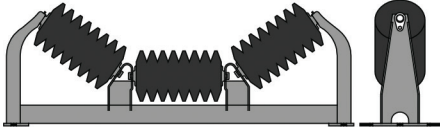
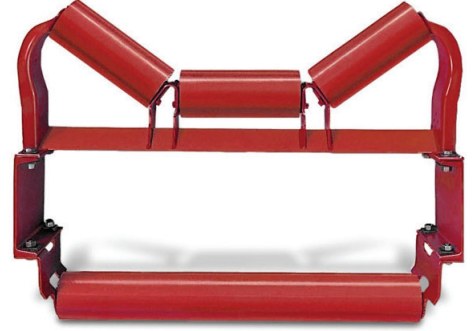
- The configuration of the conveyor
- The conditions of access
- Weather conditions
- Temperature -30°C (-22°F) to 200°C (392°F) peak



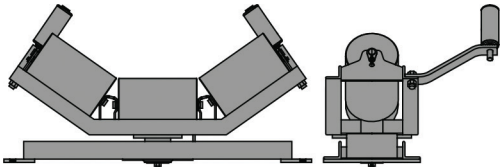
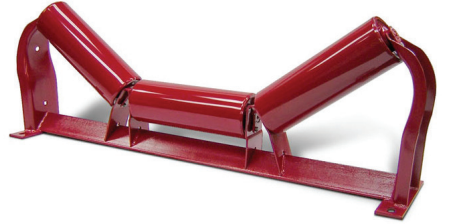
## TYPES & APPLICATIONS



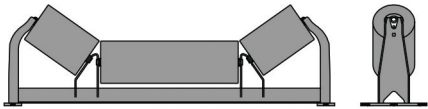
**Equal Troughing Idlers** support the belt and load in the transport section of the conveyor. Designed to meet or exceed the load limits established by the Conveyor Equipment Manufacturers Association (CEMA).



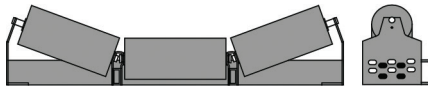
**Impact Troughing Idlers** are a special version of troughing idlers, providing a roll with cushioning rubber discs to lessen the belt damage due to impact from materials being loaded onto the belt. The frame is additionally reinforced to increase rigidity.



**Self-Aligning Idlers**, troughing, flat and return, assist in keeping the conveyor belt centered on the conveyor when temporary or transient conditions could result in belt misalignment.



**Unequal Troughing (Picking) Idlers** are used to reduce the height to aid in magnetic separation, picking, sorting, or manual separation. The inclined roll ends turn up the belt to minimize spillage. Rubber disc rolls are also available. The load ratings are greatly reduced from standard troughing idlers because most of the weight is on the long center roll.



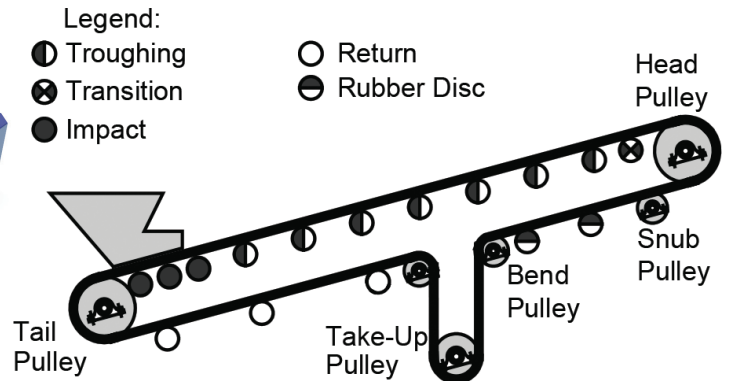
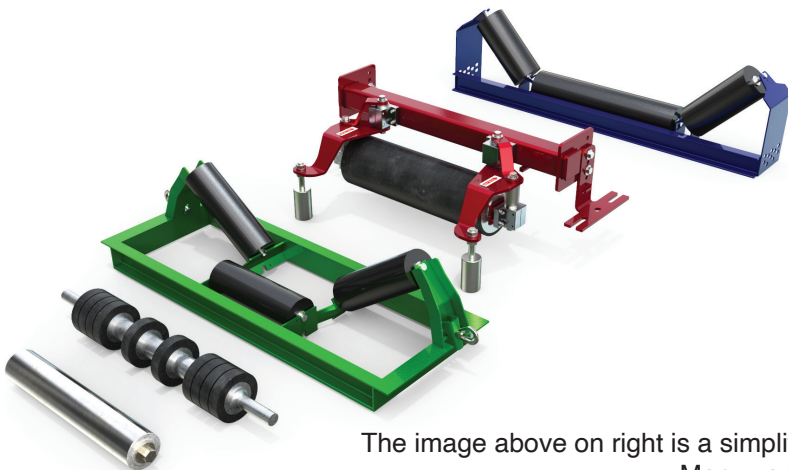
**Channel Inset Troughing Idlers** are attached to a channel conveyor or other vertical surface by side mounting. They are used in tight clearance areas requiring a low profile. Rubber disc rolls are also available. Designed to interchange with other major brands.



**Flat Carrier Idler** applications include picking, sorting, feeders, and package handling. Rubber disc rolls are also available. Load ratings are the same as return rolls and are greatly reduced from that of troughing idlers because of the long shaft length and having only two bearings.

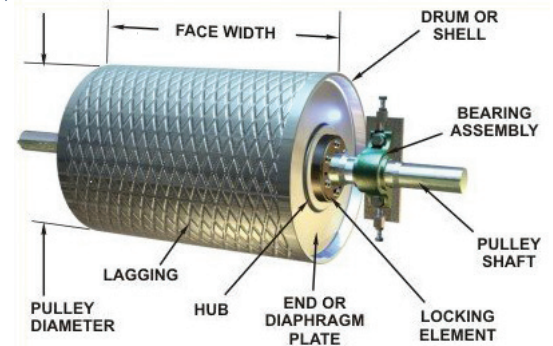
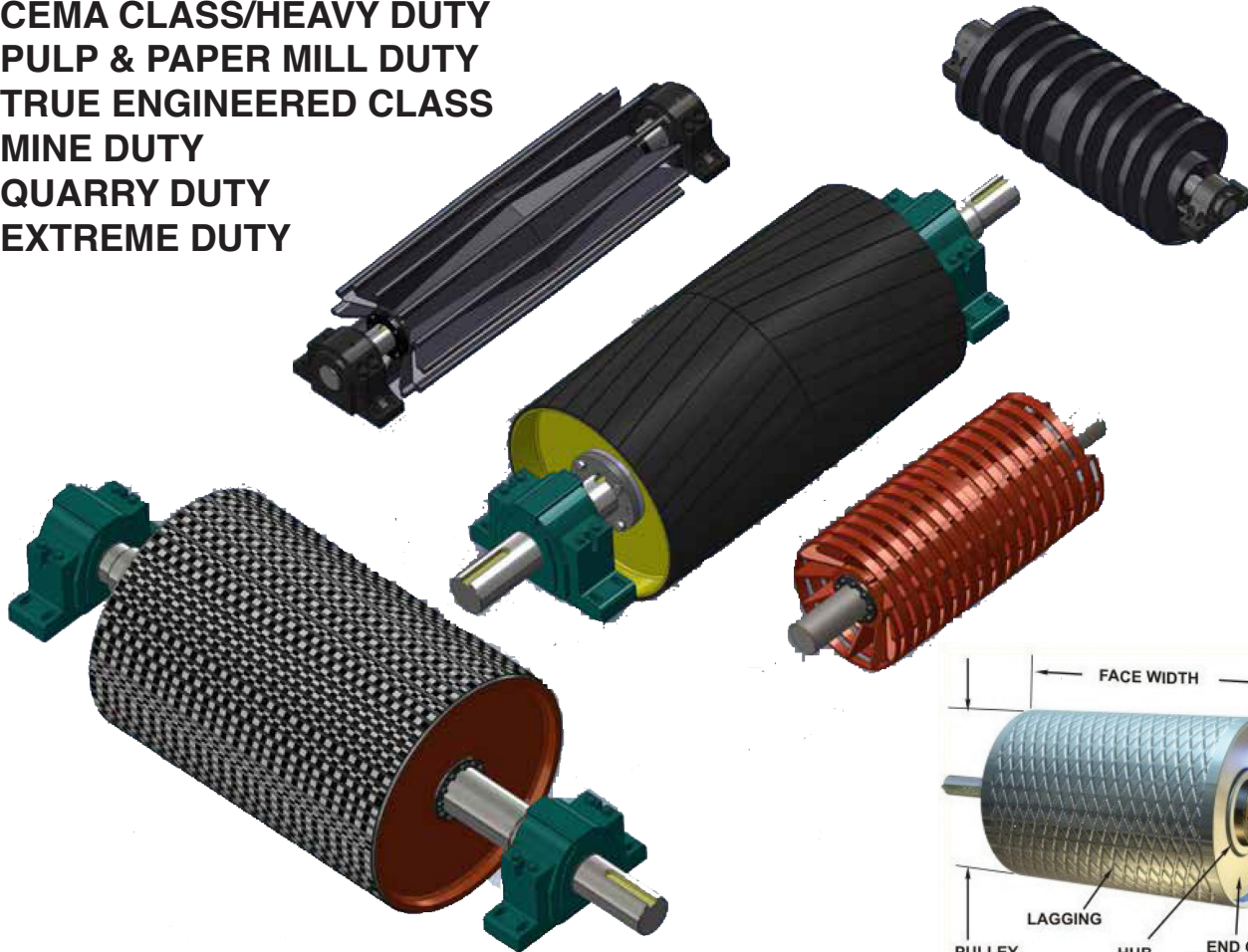


**Live Shaft Idlers** with pillow block bearings provide an increased loading capacity. Available in solid and spaced rubber discs rolls and steel rolls.



The image above on right is a simplified conveyor used to illustrate basic belt conveyor components. Many variations of elevation, loading, discharge, idlers and idler spacing, pulleys, and accessories are possible.

- CEMA CLASS/HEAVY DUTY
- PULP & PAPER MILL DUTY
- TRUE ENGINEERED CLASS
- MINE DUTY
- QUARRY DUTY
- EXTREME DUTY



## PULLEY LAGGING



HER-RINGBONE GROOVE LAGGING



CHEVRON GROOVE LAGGING



DIAMOND GROOVE LAGGING



CIRCUMFERENTIAL GROOVE LAGGING

Conveyor Pulley Lagging delivers increased traction and pulley life over non lagged pulleys. Increased traction between the pulley face and the belt bottom cover reduces belt slippage and helps to improve belt tracking. Vulcanized rubber lagging protects the pulley's face from wear and extends pulley service life.

• As much as 50% increase in coefficient of friction over non lagged pulleys

• Protects pulley face from wear and extends pulley service life

• Herringbone and Diamond Grooves shed water and dirt

• Improves Belt Tracking



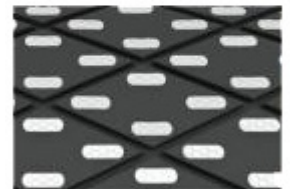
ALIGNER GROOVE LAGGING



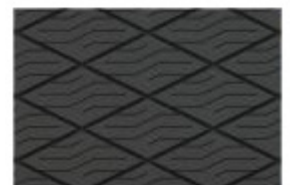
CERAMIC LAGGING



VULCANIZED ENGINEERED CERAMIC LAGGING



CRAFT-LAG SLIDE ON STYLE LAGGING





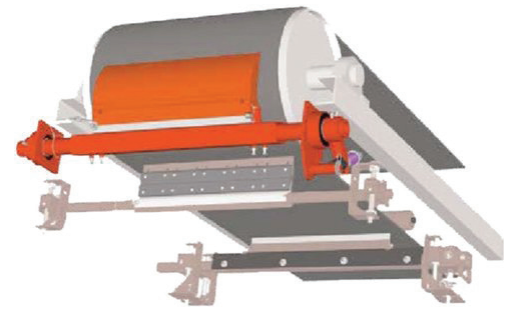
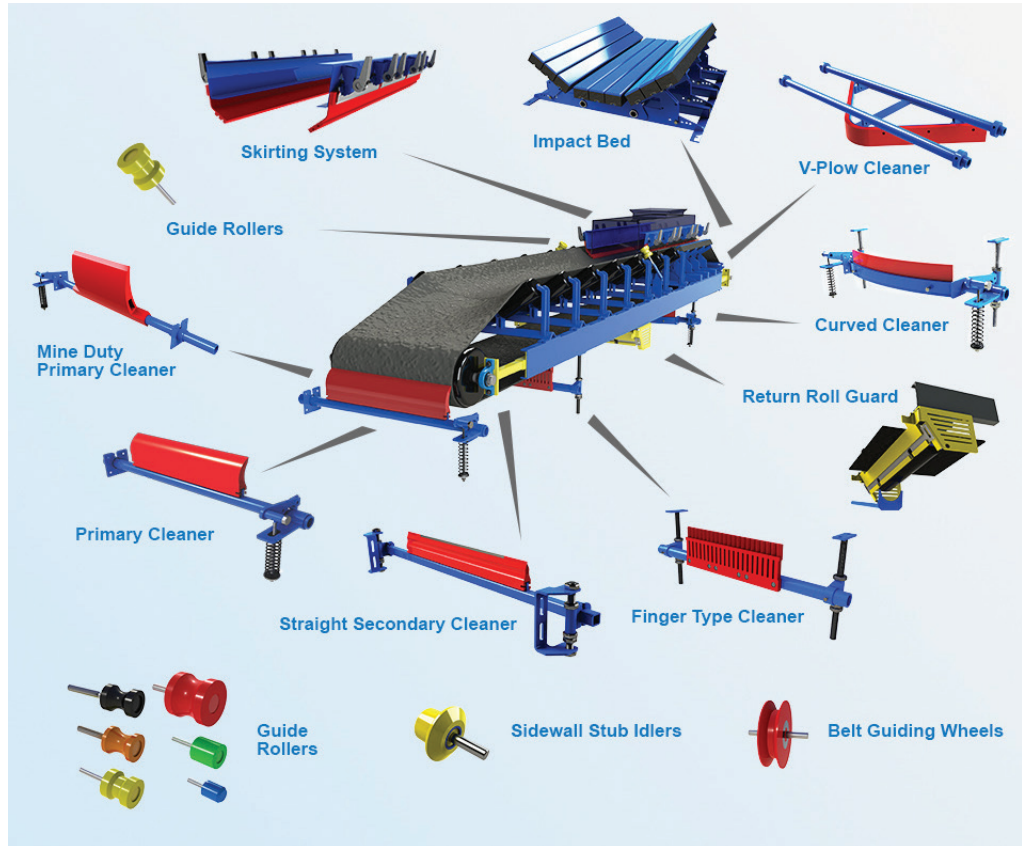
# BELT CLEANERS & SCRAPER SYSTEMS

Goodyear Rubber  
is your  
**BEST SOURCE**  
for Conveyor Pre-cleaners,  
Primary and secondary  
belt scraper systems...  
AND Rubber skirtboard  
and skirt systems.

You can count on  
the answers from

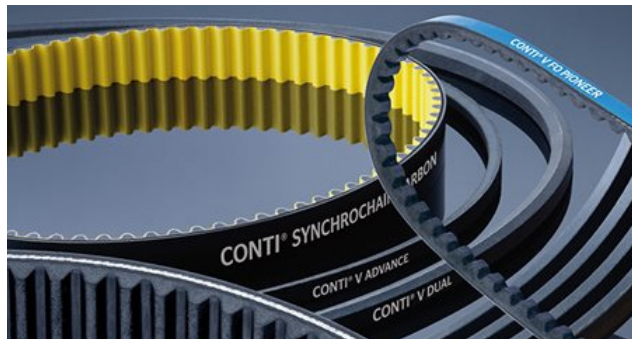


[www.GoodyearBelting.com](http://www.GoodyearBelting.com)  
[www.GoodyearRubberProducts.us](http://www.GoodyearRubberProducts.us)  
[Sales@GoodyearRubberProducts.com](mailto:Sales@GoodyearRubberProducts.com)



# POWER TRANSMISSION PRODUCTS

Goodyear Rubber Products offers a full range of Power Transmission Products including V-Belts (both cogged and classical styles), timing belts, synchronous belts, banded belts, fractional horsepower and metric belts.



In addition to the belts, GRP offers matching sprockets, sheaves and bushings along with tension testers, sheave gauges and laser alignment tools.



## SKIRTBOARD RUBBER

SBR60 RUBBER IN STOCK IN SIZES FROM  
**1/4" - 1" Thick and 3" - 12" Wide**  
Stocked in 50 foot Rolls



**IN-STOCK**

## PURE GUM TUBING

Especially compounded, weather and ozone resistant, natural pure gum rubber. One of the most common rubber tubings used in practically every industry. Our tan pure gum meets or exceeds FDA requirements.



Stocked in various thicknesses and diameters.  
Cut to length.

## CONVEYOR BELTING /RUBBER REPAIR MATERIAL KIT

REMA RG 7000 is a urethane based rubber repair product with a fast set time and 1 hour functional cure, reducing the amount of time required to make the repair.

- Highly flexible with strong adhesions to prevent failures
- Doesn't gum up or melt during buffing at low speeds
- Made in USA

### CAN BE APPLIED TO:

- SBR Belt, Urethane Belt, PVC Belt
- Sheet Metal
- Wood
- MOR Belt
- Grain Belt
- EPDM (most manufacturers)
- MSHA Belt
- RMV Belt
- REMALINE Natural Rubber Skirting



### KIT CONTENTS:

- Resin, Solvent, Primer, Hardener
- Stir Stick, Gloves, Brush, Spatula, Rag



# Six Locations To Serve You!

## NEW LOCATION! CLEARWATER

11301 47th Street North, Clearwater, FL 33762  
(727) 822-4672 • (800) 367-4673 • Fax (727) 821-8721  
Clearwater@goodyearrubberproducts.com

## FORT MYERS

12701 Metro Parkway, Ft. Myers, FL 33966  
(239) 561-HOSE(4673) • Fax (239) 561-0018  
FtMyers@goodyearrubberproducts.com

## NEW LOCATION! ST. PETERSBURG

1901 1st Avenue S., St. Petersburg, FL 33712  
(727) 456-6380 • Fax (727) 456-6381  
StPete@goodyearrubberproducts.com

## NAPLES

5530 Shirley St., Naples, FL 34109  
(239) 596-0072 • Fax (239) 596-0073  
Naples@goodyearrubberproducts.com

## BRADENTON

6216 - 28th Street East, Bradenton, FL 34203  
(941) 739-9777 • Fax (941) 739-9778  
Bradenton@goodyearrubberproducts.com

## TAMPA

5910 Adamo Drive (Hwy 60), Tampa, FL 33619  
(813) 627-8956 • Fax (813) 627-8957  
Tampa@goodyearrubberproducts.com

VISIT OUR WEBSITE:

[www.goodyearrubberproducts.us](http://www.goodyearrubberproducts.us)

**GOODYEAR**

RUBBER PRODUCTS, INC.

EMAIL ADDRESS:

[Sales@GoodyearRubberProducts.com](mailto:Sales@GoodyearRubberProducts.com)



# 1-800-FOR-HOSE (367-4673)

24 Emergency Service for all locations is 727-822-2893 (se habla español)

## AUTOMOTIVE

Air Conditioning Hose  
D.O.T. Brake Hose  
Clutch Lines  
Fuel Lines

General Purpose Hose  
Heater Hose  
Power Steering  
Turbo Sleeve

## BELTS & BELTING

Conveyor Belt  
V-Belts • Timing Belts  
Belt Fasteners  
Fabrication  
Pulleys & Idlers

## HOSE COUPLINGS

& ACCESSORIES  
Industrial Tube Fittings  
Plastic Fittings  
Brass Pipe Fittings & Valves  
Hose Nipples  
Quick Disconnect Couplers

## GARDEN HOSE

Rubber/Plastic  
Nozzles/Accessories

## HARDWARE

Adhesives  
Tape/Duct/Elect./Teflon  
Rubber Straps w/Hooks  
Pump Diaphragms  
Paint Brushes  
Plumbing Accessories

## HYDRAULIC HOSE

Rubber & Thermoplastic Hose  
Crimp Fittings  
Reusable Fittings  
Stainless Steel  
Industrial Tube Fittings  
Adapters  
Crimp Machines & Fab Equip.  
Metrics

## INDUSTRIAL HOSE

AG Spray  
Air, Multi-Purpose

Water Hose  
Welding

## MARINE

Dock Guard & Bumpers  
Exhaust Hose  
Fuel Line, Vent, Fill Hose  
General Purpose Hose  
Sanitation & Gally Fill  
Marine Steering Hose  
Hydraulic Control Lines

## MATTING

Anti-Fatigue  
Door Mats  
Mat Runners  
Specialized  
Personalized Mats

## PROTECTIVE CLOTHING

Aprons  
Boots  
Gloves: PVC, Rubber, Leather  
Rain Suits  
Raincoats

## SAFETY EQUIPMENT

Bump Caps  
Safety Goggles, Glasses  
Safety Hats  
Safety Vests & Flags  
Traffic Cones

## TUBING

Nylon • Silicone  
Polyethylene  
Polypropylene  
Reinforced Vinyl  
Clear Vinyl • Gum

## VALVES

Ball, Gate, Check  
Actuated Valves  
Needle Valves  
Brass/Stainless/Plastic  
Blow Guns  
Filters  
Regulators  
Lubricators  
Gauges

**Representing:** Accuflex Industrial Hose • Allpax • Amatex • American Biltrite • Apache Hose & Belting • Apache Mills • Band-it • Baycon • Bee Valve • Belt Service • Boston Hose • Bradford Fittings • Brake Quip • Brennan Industries • Campbell Fittings • Conveyor Accessories • Darco Southern • Dixon Powhatan • Dixon Valve & Coupling • Duramax • Eaton • Everitte Couplings • Flexaust • Flexco • Flexible Technologies • Flexitallic • Foam Fair Industries • Gateway Safety • Goodman Hewitt • Green Leaf • Hose Handlers, Int'l • HoseMaster • Hygenic Corporation • Ideal / Tridon • Ja-Bar Silicone • Jason Industrial • Kanaflex • Kuriyama • Midland Metal • Mol Belting • Mulhern Belting • National Equipment Company • Novaflex • Oetiker • Pacific Echo • Parker Hannifin • Proco Products • PT Coupling • R3 Safety • SEPCO • Snap-Tite • Stucchi • Sun Flow • Synaflex • TAPCO • Teadit • Thermoid • Thermoseal • Titan Industries • U.S. Hose/Wilcox/Tift • Unaflex • United Pacific Distributors • Urethane Solutions • Van Gorp • Warco Biltrite • Webstone Company • Zone Distribution Company